

ROUGH COUNTRY

SUSPENSION SYSTEMS®

JEEP 19-2020 JK, JL & JT Front Tube Bumper

Thank you for choosing Rough Country for all your vehicle needs.

Please read instructions before beginning installation. Check the kit hardware against the kit contents shown below. Be sure you have all needed parts and know where they go.

If question exist, please call us @1-800-222-7023. We will be happy to answer any questions concerning this product.

Check all fasteners for proper torque. Check to ensure for adequate clearance between all components.

Periodically check all hardware for tightness.

KIT CONTENTS:

20" Dual Row LED Light Kit x1
 2" Square LED Light Kit x1
 Bumper x1
 Skid Plate x1
 D-Ring x2
 JL Mounting Tab x2
 JK Mounting Tab x2

TOOLS NEEDED:

11mm Wrench or Socket
 13mm Wrench or Socket
 16mm Wrench or Socket
 17mm Wrench or Socket
 18mm Wrench or Socket
 19mm Wrench or Socket
 4mm Allen Wrench

HARDWARE INCLUDED:

10mm Double T-Bolt x2
 8mm Lock Washer x7
 8mm Flat Washer x9
 8mm x 25mm Button Head x7
 8mm Hex Nut x2
 10mm Lock Washer x4
 10mm Flat Washer x2
 10mm Flat Washer x4
 10 x 35mm Button Head x2
 12mm Flat Washer x8
 12mm Lock Nuts x8
 10mm Hex Nuts x4
 12mm T-Bolt x4
 12mm Plastic Retainer x8



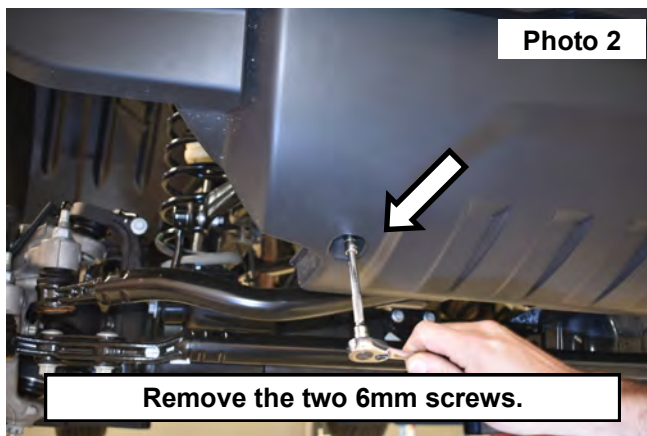
Torque Specs:

Size	Grade 5	Grade 8	Size	Class 8.8	Class 10.9
5/16"	15 ft/lbs	20ft/lbs	6MM	5ft/lbs	9ft/lbs
3/8"	30 ft/lbs	35ft/lbs	8MM	18ft/lbs	23ft/lbs
7/16"	45 ft/lbs	60ft/lbs	10MM	32ft/lbs	45ft/lbs
1/2"	65 ft/lbs	90ft/lbs	12MM	55ft/lbs	75ft/lbs
9/16"	95 ft/lbs	130ft/lbs	14MM	85ft/lbs	120ft/lbs
5/8"	135ft/lbs	175ft/lbs	16MM	130ft/lbs	165ft/lbs
3/4"	185ft/lbs	280ft/lbs	18MM	170ft/lbs	240ft/lbs

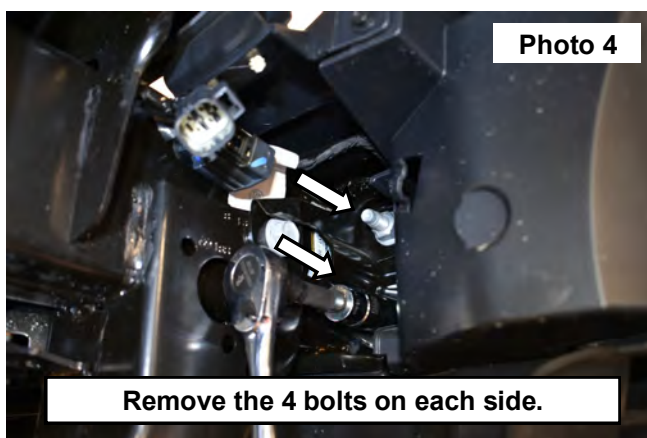
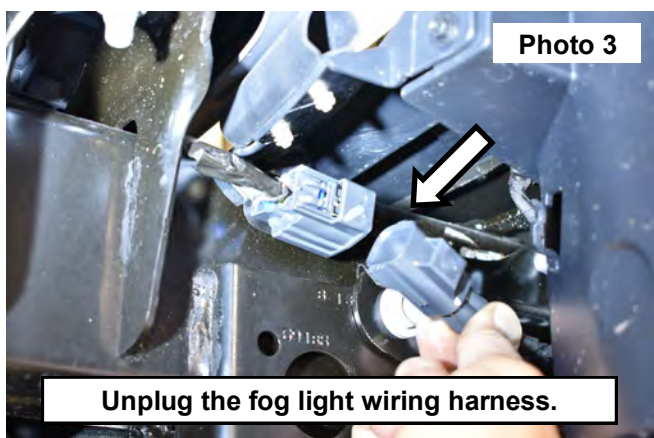


INSTALLATION INSTRUCTONS

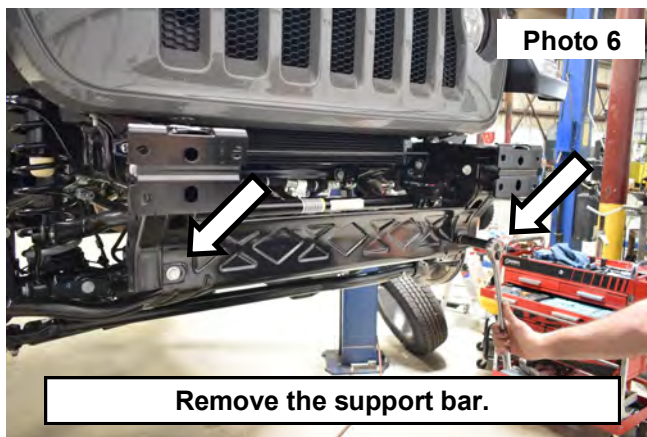
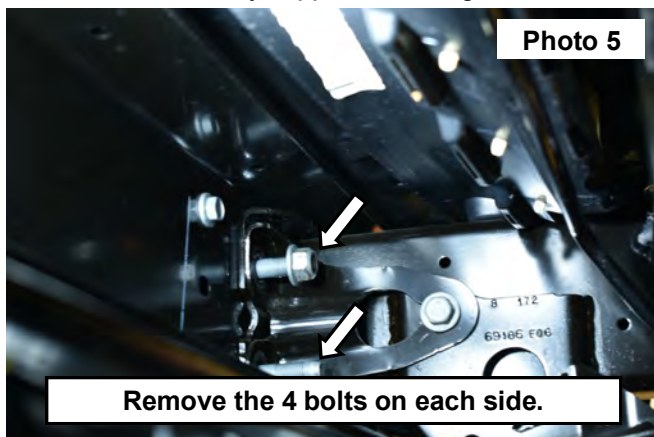
1. Place vehicle on a flat surface and set emergency brake.
2. Remove the 2 plastic pins on the top of the front bumper cover between the bumper and grill and the clips holding the trim piece to the bumper. **See Photo 1.**
3. Remove the two 6mm screws from the factory lower skid plate. **See Photo 2.**



4. Unplug the fog light wiring harness on the passenger side as shown in **Photo 3.**
5. Support the bumper. Then remove the 4 bolts on each side using a 18mm socket and remove the bumper from the vehicle. **See Photo 4 & 5.**



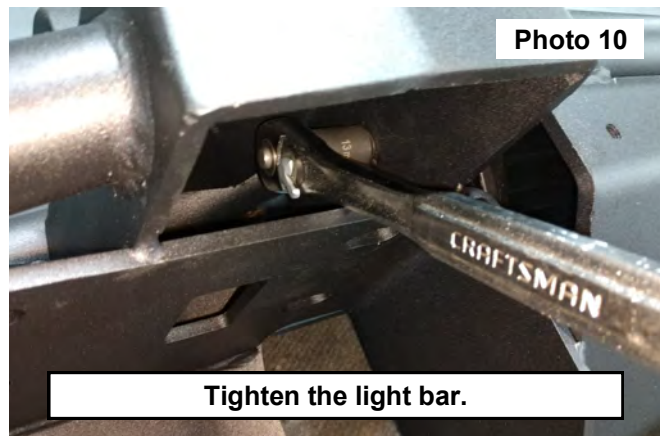
6. Remove the factory support bar using a 16mm socket. **See Photo 6.**



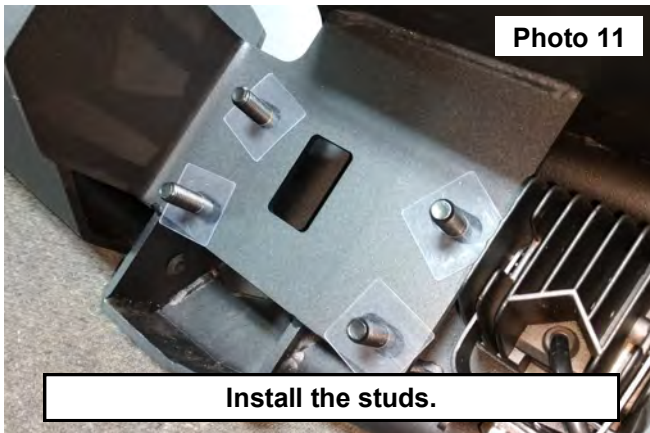
7. Locate the supplied 2" Cube LED lights and the supplied 20" center LED light. **See Photo 7.**
8. Install the 2" LED lights onto the outer side mounts of the bumper using the supplied hardware in the light kit. **See Photo 8.**



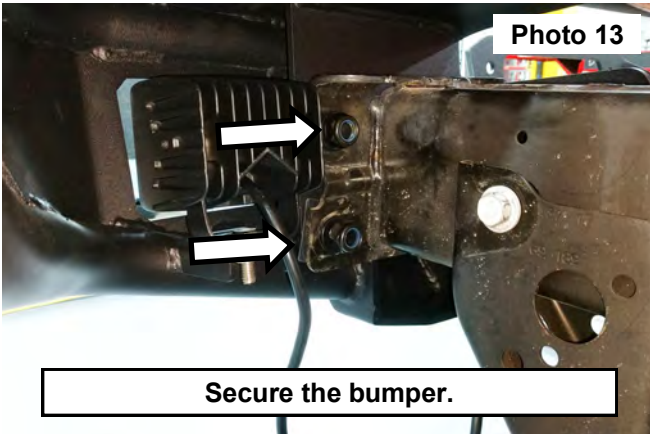
9. Install the 20" light bar into the bumper. **See Photo 9.**
10. Secure in the bumper using the supplied hex head bolts. Snug using a 13mm socket. DO NOT over tighten the light bar hardware. **See Photo 10.**



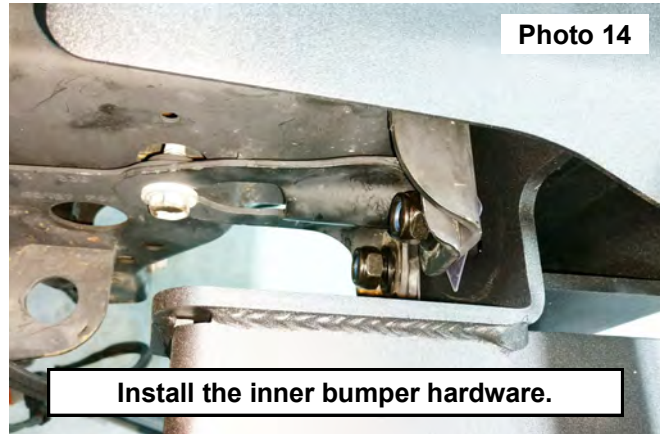
11. Install the studs from the back side of the bumper mount and hold in place using the clear retainers. **See Photo 11.**
12. Support the bumper and install onto the vehicle. **See Photo 12.**



13. Secure the bumper to the frame using the supplied 12mm nuts and washers onto the studs installed in the bumper. **See Photo 13.** Do not fully tighten using a 19mm Socket.
14. Install the 12mm nuts and washers onto the inner studs. **See Photo 14.** Adjust bumper as needed and tighten using a 19mm Socket.

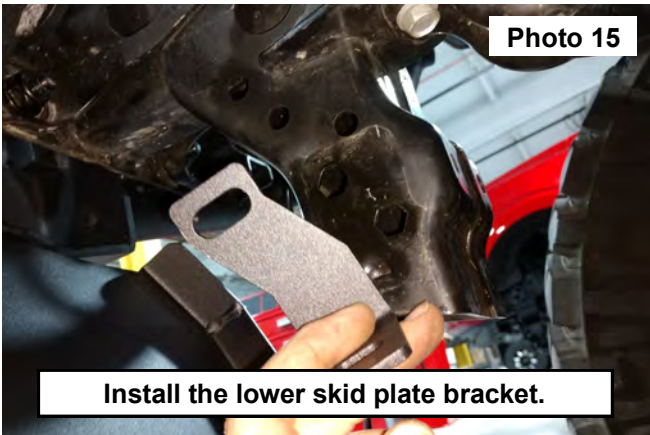


Secure the bumper.

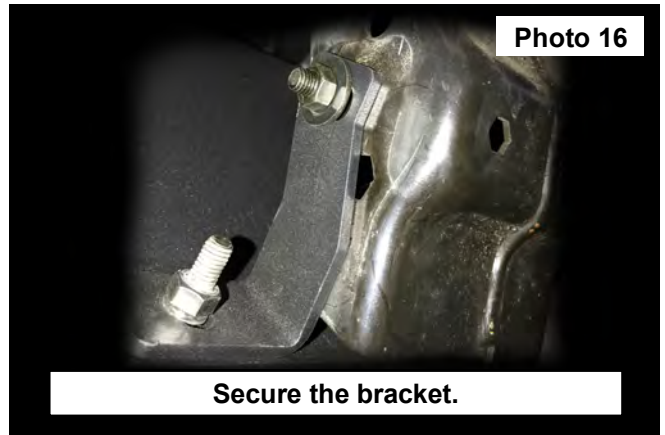


Install the inner bumper hardware.

15. Locate the lower skid plate brackets. **See Photo 15.**
16. Install the brackets onto the frame using (1) of the supplied 8mm flag bolts, (1) 8mm Lock washer and (1) 8mm flat washer on the inside of the frame. Then secure the bracket using (1) 8mm nut and (1) 8mm flat washer. Tighten using a 13mm socket. **See Photos 16 and 17.**

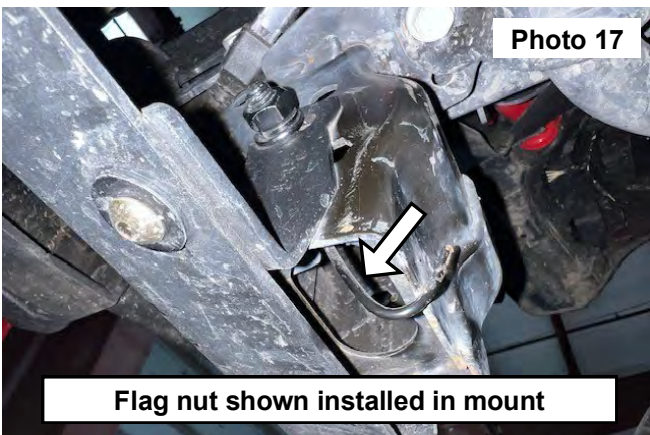


Install the lower skid plate bracket.



Secure the bracket.

17. Locate the lower skid plate. **See Photo 18.**

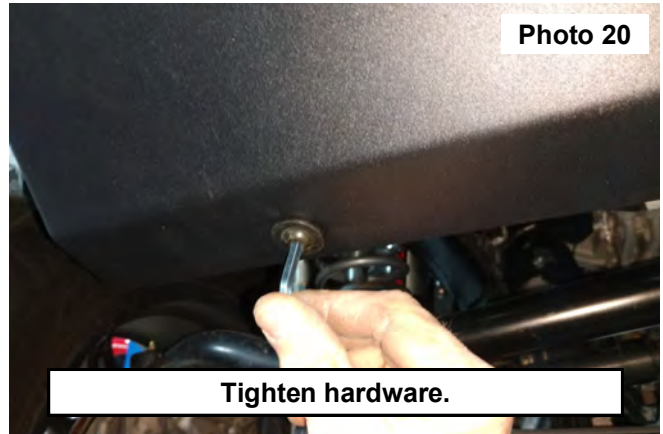
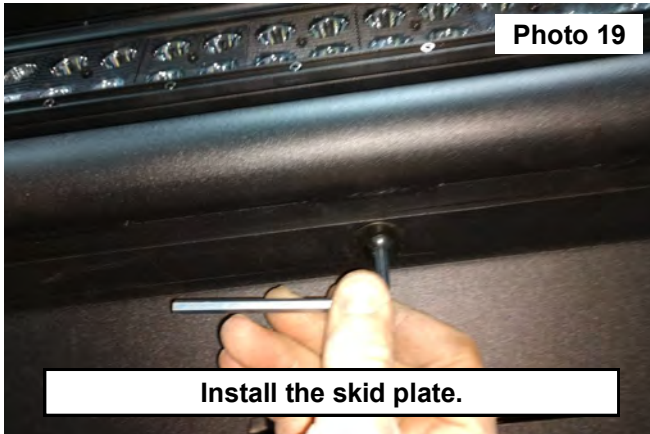


Flag nut shown installed in mount

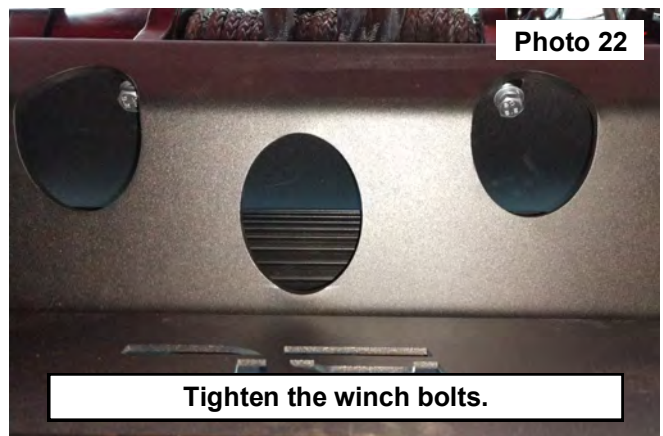


Locate the lower skid plate.

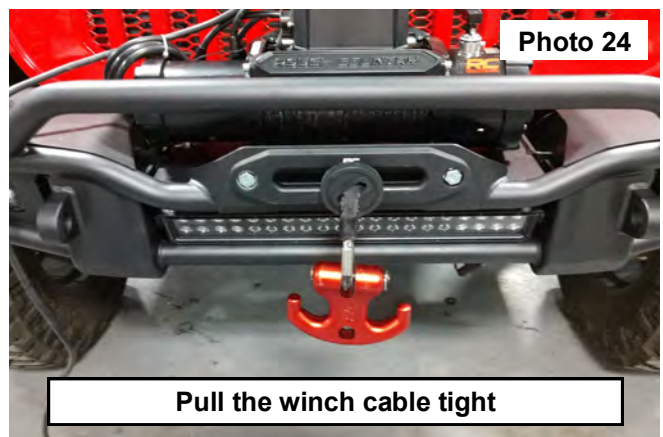
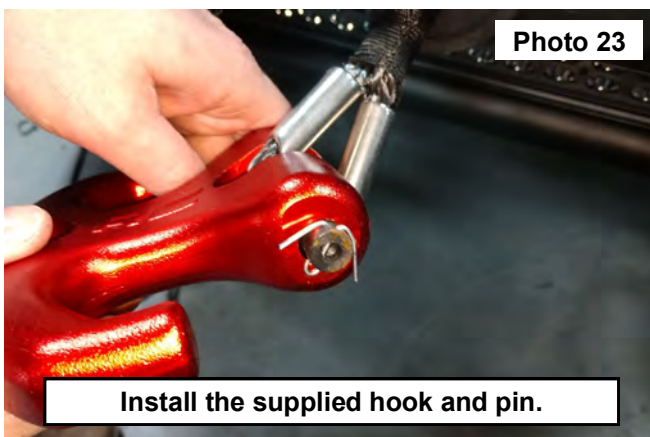
18. Secure the skid plate using (5) 4mm button head bolts, (10) 4mm flat washers and (5) 4mm nylock nuts. Tighten using a 4mm allen wrench and a 11mm socket. **See Photos 19 and 20.**



19. **Pics and steps show Rough Country winch install:** Install the (4) square nuts into the lower mounts of the winch and install the ground wire on the stud. Then install the winch into the bumper. **See Photo 21.**
20. Secure the winch using the (4) supplied 10mm bolts into the square nuts. Tighten using a 17mm socket. **See Photo 22.**



21. Install the fair lead using the 10mm hardware and tighten using a 17mm wrench and socket. Install the supplied hook onto the winch cable. **See Photo 23.**
22. Pull the winch cable tight onto the fair lead. **See Photo 24.**
23. Connect the wiring harnesses supplied with the LED light kits to the battery.
24. Connect the winch to the battery.



By purchasing any item sold by Rough Country, LLC, the buyer expressly warrants that he/she is in compliance with all applicable, State, and Local laws and regulations regarding the purchase, ownership, and use of the item. It shall be the buyers responsibility to comply with all Federal, State and Local laws governing the sales of any items listed, illustrated or sold. The buyer expressly agrees to indemnify and hold harmless Rough Country, LLC for all claims resulting directly or indirectly from the purchase, ownership, or use of the items.

