

JEEP 2018-22 Rubicon Winch Plate

Thank you for choosing Rough Country for all your vehicle needs.

Please read instructions before beginning installation. Check the kit hardware against the kit contents shown below. Be sure you have all needed parts and know where they go.

If question exist, please call us @1-800-222-7023. We will be happy to answer any questions concerning this product.

Check all fasteners for proper torque. Check to ensure for adequate clearance between all components.

Periodically check all hardware for tightness.

KIT CONTENTS:

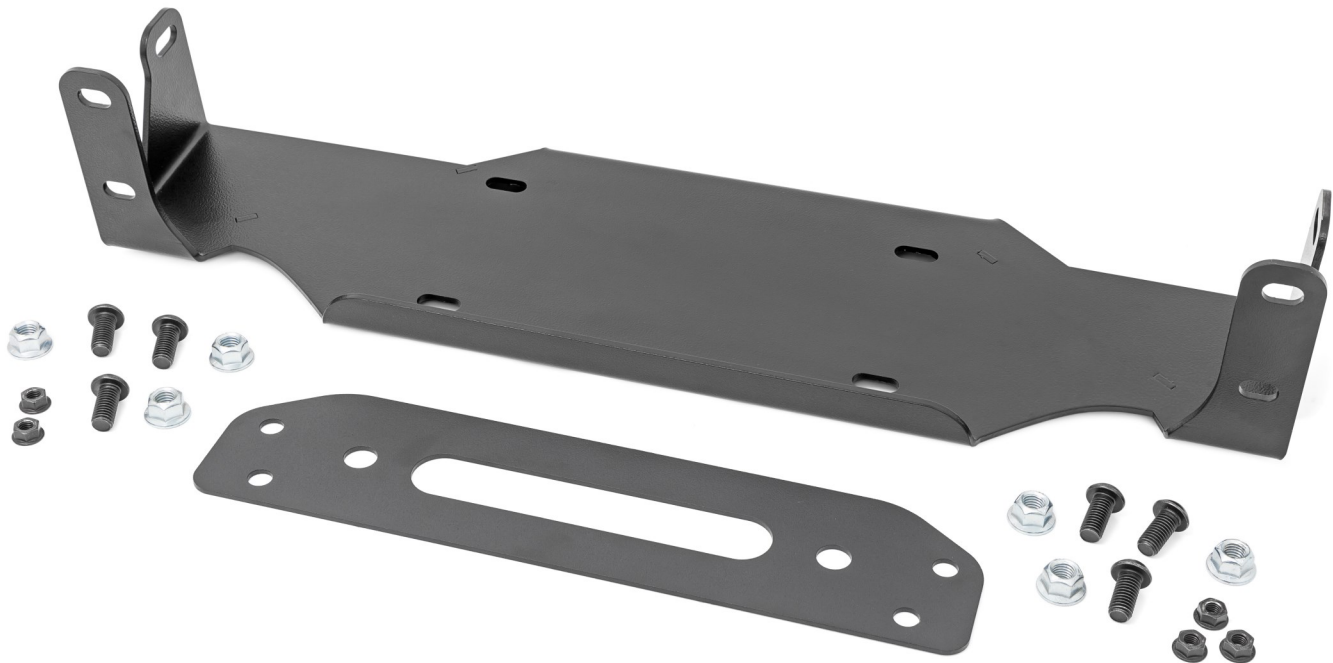
- Winch Plate x1
- Cover Plate x1

TOOLS NEEDED:

- Clip Removal Tool
- 15mm Wrench or Socket
- 19mm Wrench or Socket

HARDWARE INCLUDED:

- Spacer Washers x4
- 12mm x 25mm Button Allen bolt x6
- 12mm Flange Lock Nuts x6
- 8mm Flange Lock Nuts x5



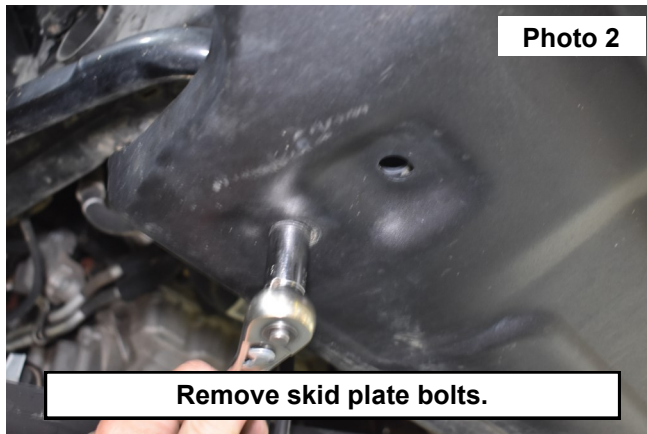
Torque Specs:

Size	Grade 5	Grade 8	Size	Class 8.8	Class 10.9
5/16"	15 ft/lbs	20ft/lbs	6MM	5ft/lbs	9ft/lbs
3/8"	30 ft/lbs	35ft/lbs	8MM	18ft/lbs	23ft/lbs
7/16"	45 ft/lbs	60ft/lbs	10MM	32ft/lbs	45ft/lbs
1/2"	65 ft/lbs	90ft/lbs	12MM	55ft/lbs	75ft/lbs
9/16"	95 ft/lbs	130ft/lbs	14MM	85ft/lbs	120ft/lbs
5/8"	135ft/lbs	175ft/lbs	16MM	130ft/lbs	165ft/lbs
3/4"	185ft/lbs	280ft/lbs	18MM	170ft/lbs	240ft/lbs

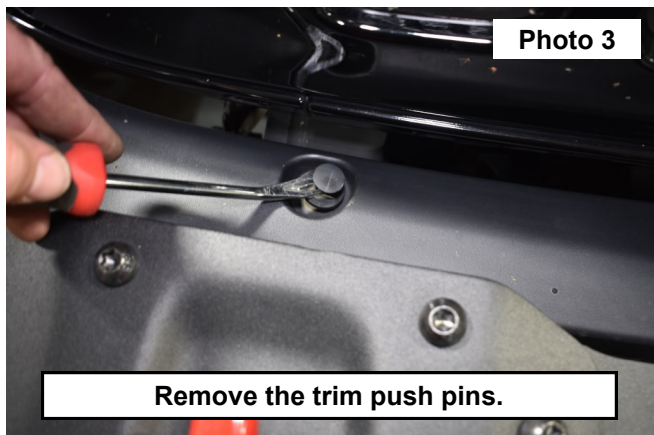


INSTALLATION INSTRUCTONS

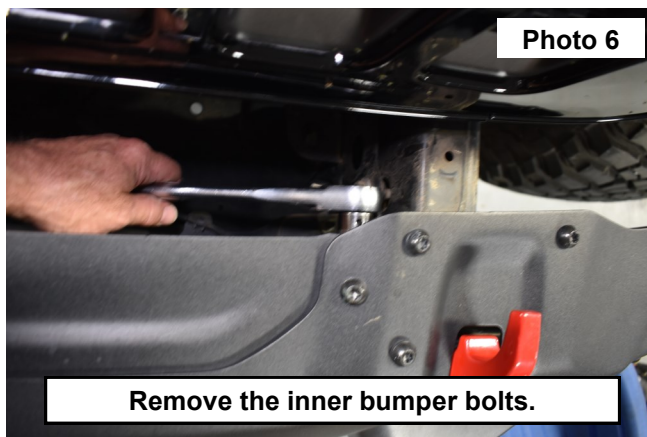
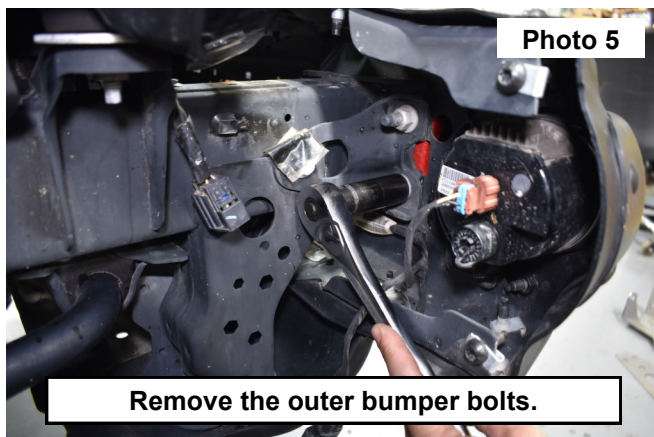
1. Disconnect the fog light wiring harness from the passengers side of the frame behind the bumper. **See Photo 1.**
2. Using a 15mm socket remove the 4 bolts from the skid plate (2) per side. **See Photo 2.**



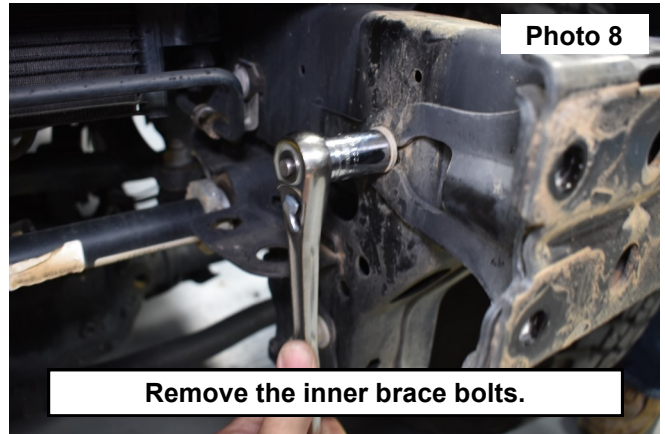
3. Lift the center of the (2) clips in the trim cover under the grille and remove the clips and the trim panel. **See Photos 3 and 4.**



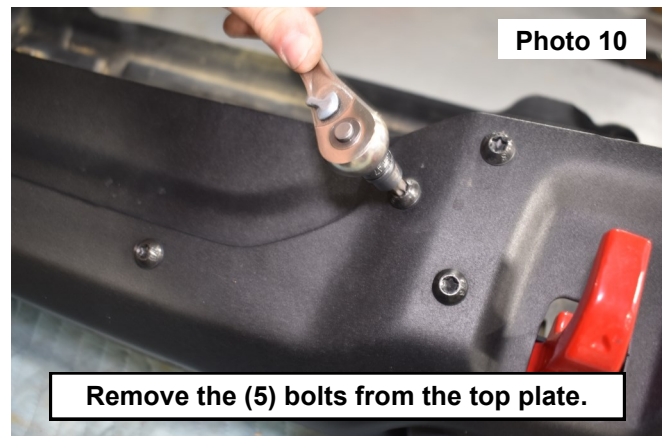
4. Using an 19mm socket remove the 8 bolts from the front bumper mounts (4) per side. **See Photos 5 and 6.**



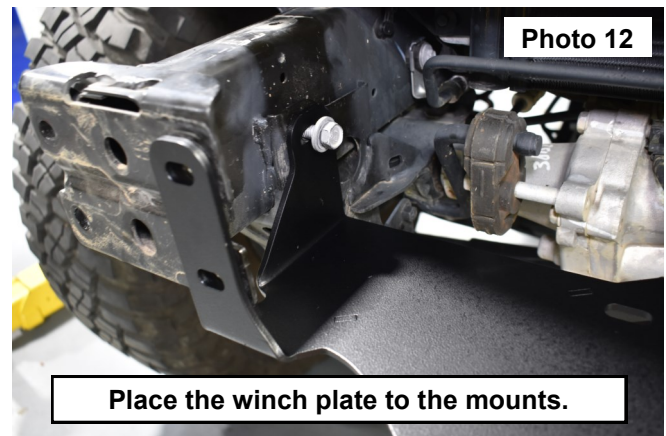
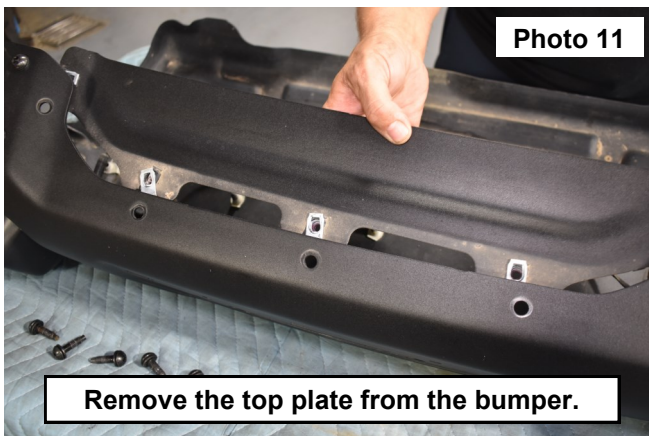
5. Support and remove the bumper from the vehicle. **See Photo 7.**
6. Remove the bolt from the drivers side inner frame bracket using a 15mm socket. **See Photo 8.**



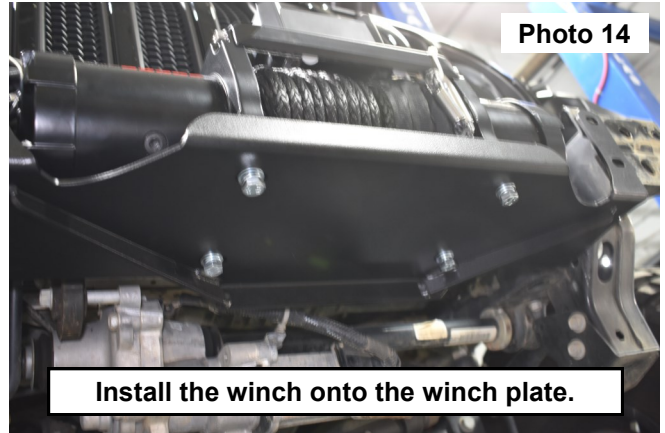
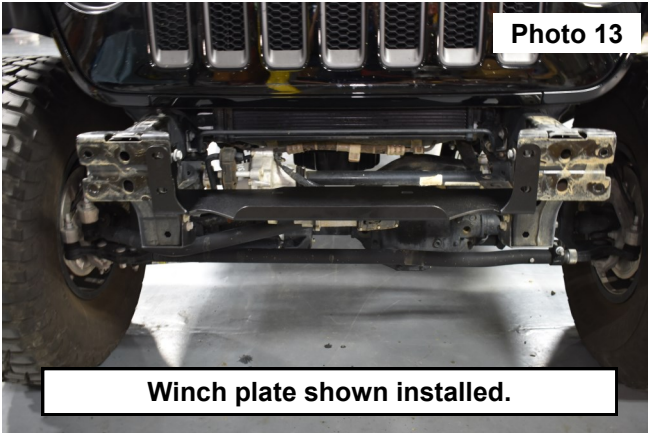
7. Remove the bolt from the Passengers side inner frame bracket using a 15mm socket. **See Photo 9.**
8. Remove the (5) bolts from the top plate using a T35 Torx bit. **See Photo 10.**



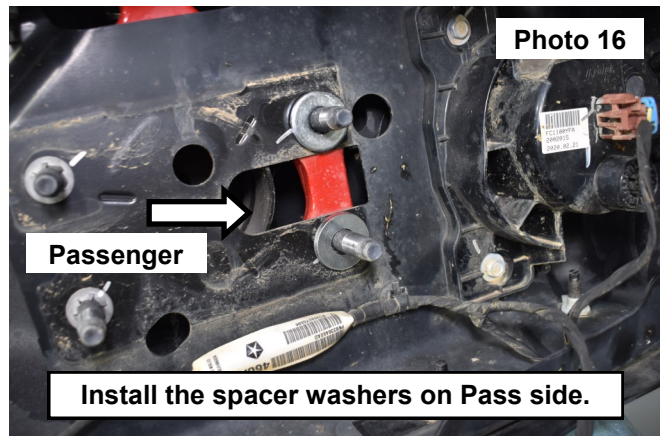
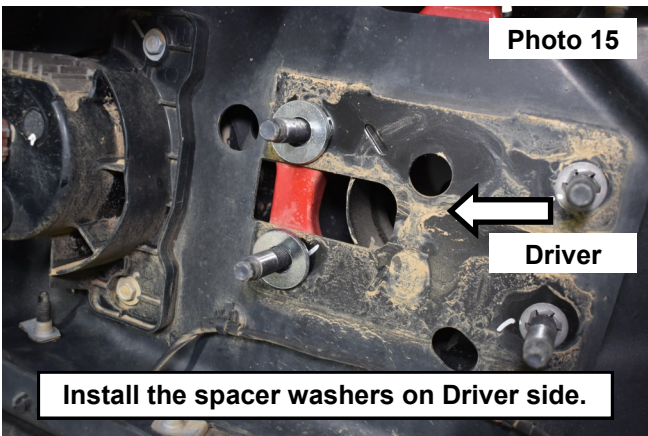
9. Remove the top plate from the bumper. **See Photo 11.**
10. Install the winch plate to the front of the frame bumper mounts then secure the winch plate using the OE bolts in the inner side mount holes. **See Photo 12.**



11. Winch plate shown installed onto the frame. **See Photo 13.**
12. Install the winch onto the winch plate using the provided hardware in the winch kit. Tighten the winch to the winch plate. **See Photo 14.**



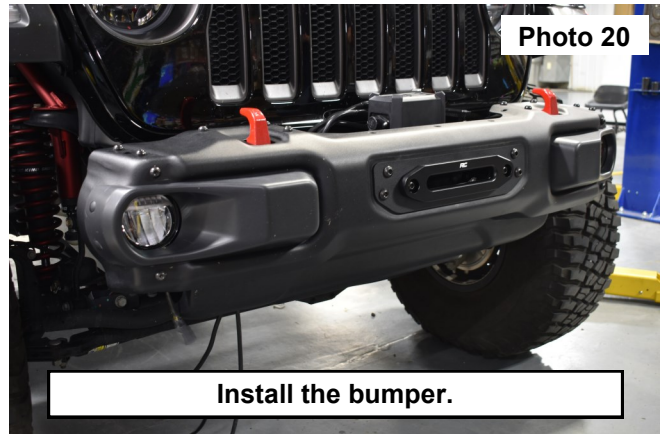
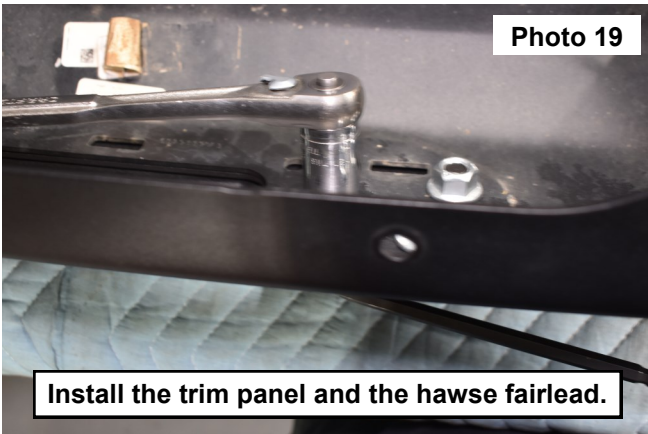
13. Place (2) spacer washers onto the outer studs of the bumper mounts, place onto the driver and passengers side of the bumper. **See Photos 15 and 16.**



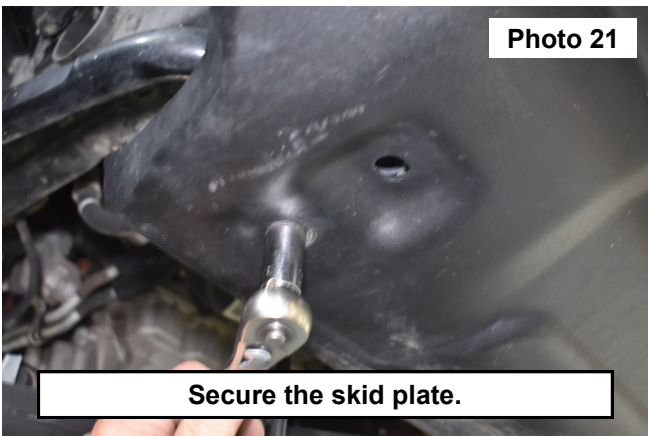
14. Remove the front cover plate from the bumper. **See Photo 17.**
15. Install the trim panel and the hawse fairlead on to the bumper securing them using (6) 12mm x 25mm button Allen head bolts and (6) 12mm Flange nuts. **See Photo 18.**



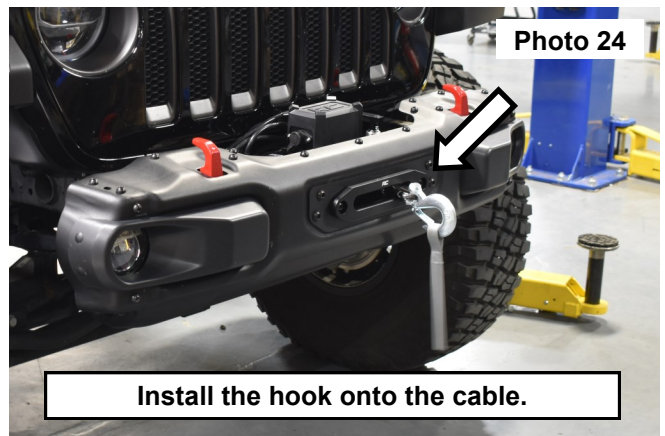
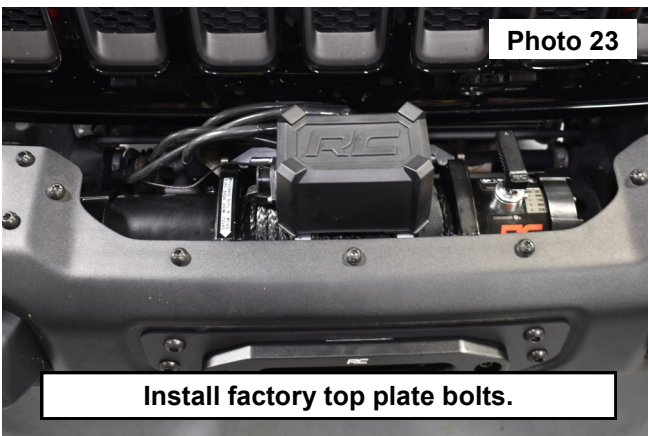
16. Tighten the trim panel and the hawse fairlead using a Allen wrench and socket. **See Photo 19.**
17. Place the cable lead through the hawse fairlead.
18. Install the bumper onto the vehicle, using the OE flange nuts to secure to the bumper to the frame end. Tighten the bumper using a 19mm socket. **See Photo 20.**



19. Secure the lower skid plate using the OE bolts and a 15mm socket. **See Photo 21.**
20. Connect the OE bumper harness to the vehicle. **See Photo 22.**
21. Connect the wiring from the winch to a power source on the vehicle.



22. Install the 5 factory bolts using the supplied 8mm flange lock nuts and tighten using a T35 and a 13mm wrench. **See Photo 23.**
23. Install the hook onto the cable end using the supplied hardware. **See Photo 24.**



By purchasing any item sold by Rough Country, LLC, the buyer expressly warrants that he/she is in compliance with all applicable, State, and Local laws and regulations regarding the purchase, ownership, and use of the item. It shall be the buyers responsibility to comply with all Federal, State and Local laws governing the sales of any items listed, illustrated or sold. The buyer expressly agrees to indemnify and hold harmless Rough Country, LLC for all claims resulting directly or indirectly from the purchase, ownership, or use of the items.



