

## CHEVY 2020-2024 2500 MUD FLAP DELETE

Thank you for choosing Rough Country for all your vehicle needs.

Please read instructions before beginning installation. Check the kit hardware against the kit contents shown below. Be sure you have all needed parts and know where they go.

If question exist, please call us @1-800-222-7023. We will be happy to answer any questions concerning this product. Check all fasteners for proper torque. Check to ensure for adequate clearance between all components.

Periodically check all hardware for tightness.

### KIT CONTENTS:

- Dr. Front Cap (94034010)
- Pass. Front Cap (94034011)
- Dr. Rear - Front Cap (94034012)
- Pass. Rear - Front Cap (94034013)
- Dr. Rear - Rear Cap (94034014)
- Pass. Rear - Rear Cap (94034015)

### TOOLS REQUIRED:

- T15 Torx
- 13mm Wrench or Socket
- Paint Pen
- Metal Cutting Saw
- Sandpaper
- Paint
- Tape Measurer
- Scissors

Part numbers are embossed on caps for identification.



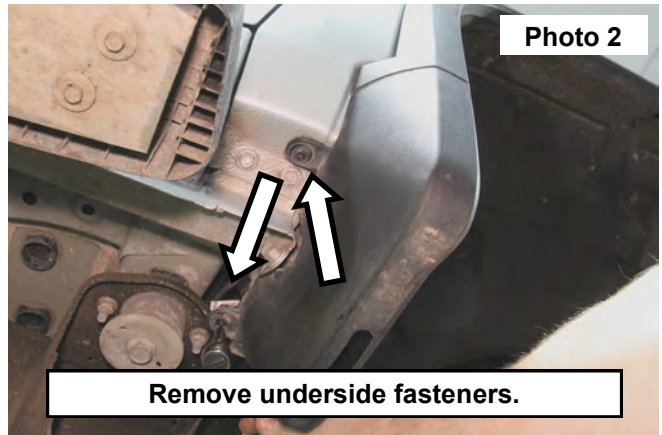
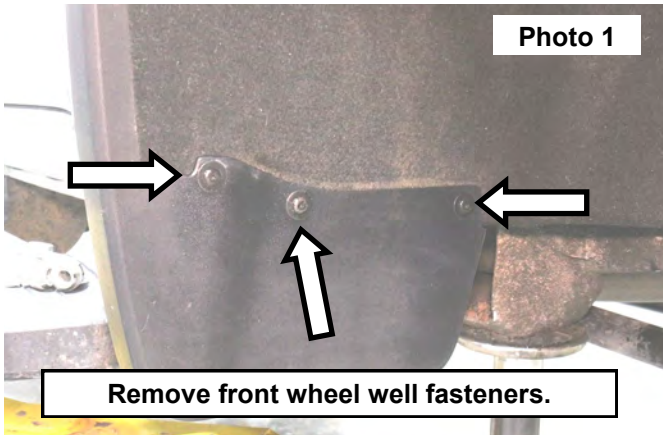
### Torque Specs:

Size	Grade 5	Grade 8	Size	Class 8.8	Class 10.9
5/16"	15 ft/lbs	20ft/lbs	6MM	5ft/lbs	9ft/lbs
3/8"	30 ft/lbs	35ft/lbs	8MM	18ft/lbs	23ft/lbs
7/16"	45 ft/lbs	60ft/lbs	10MM	32ft/lbs	45ft/lbs
1/2"	65 ft/lbs	90ft/lbs	12MM	55ft/lbs	75ft/lbs
9/16"	95 ft/lbs	130ft/lbs	14MM	85ft/lbs	120ft/lbs
5/8"	135ft/lbs	175ft/lbs	16MM	130ft/lbs	165ft/lbs
3/4"	185ft/lbs	280ft/lbs	18MM	170ft/lbs	240ft/lbs

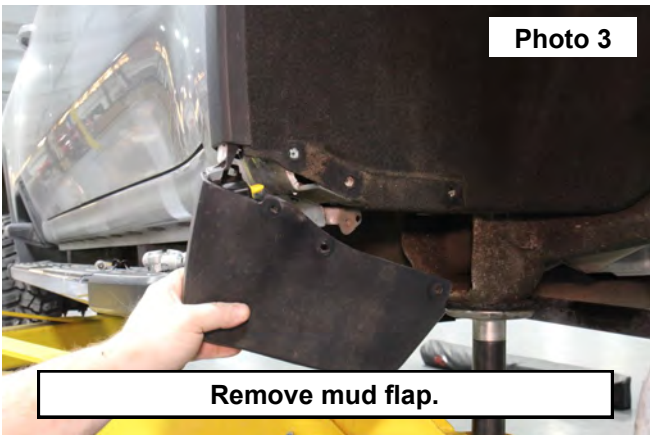


## INSTALLATION INSTRUCTONS

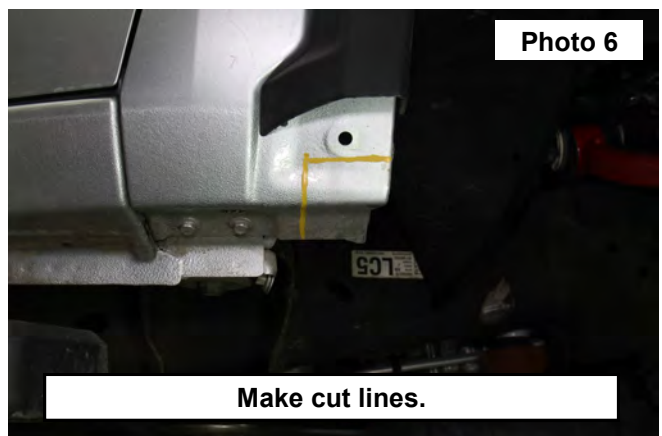
1. Remove the front passenger side factory mud flap using a T15 Torx. Retain hardware for reuse. Remove mud flap. **See Photo 1 and Photo 2.**



2. Pull the mud flap from vehicle. NOTE: Mud flap has two hidden clips. One in the fender and one in the fender flare. **See Photo 3.**
3. Fold the inner fender back to gain access to the bracket bolted to the vehicle body. **See Photo 4.**

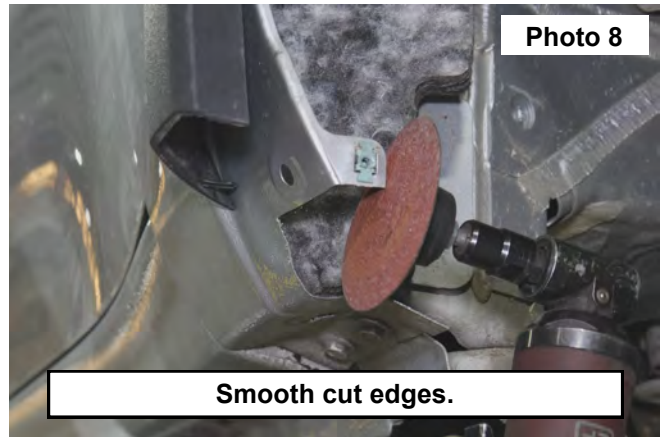
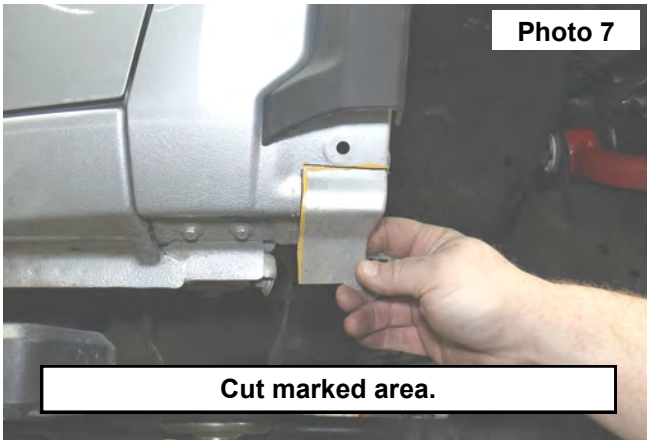


4. Remove the three bolts holding the bracket using a 13mm wrench. **See Photo 5.**
5. Use a tape measurer and make a mark with a paint pen 1 1/8" from the bottom and 2 1/4" to the back. **See Photo 6.**

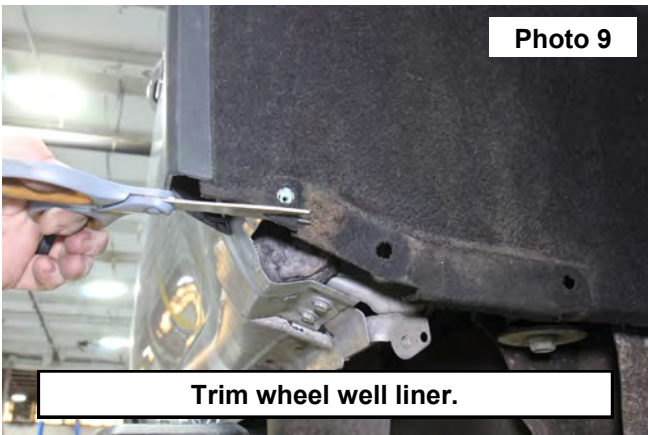




6. Use a metal cutting tool to cut the fender along the previously marked lines. **See Photo 7.**
7. Smooth the cut edges with sandpaper. **See Photo 8.**



8. Trim the wheel well liner with a pair of scissors. **See Photo 9.**
9. Install passenger front cap (94034011) using factory hardware. Tighten with a T15 Torx. **See Photo 10 and Photo 11.**
10. Repeat Step 1 through Step 9 using the driver front cap (94034010).



11. Remove the three factory bolts holding the passenger front-rear wheel well mud flap as shown in **Photo 12** with a T15 Torx. Retain hardware for reuse.



12. Remove the two factory bolts holding the passenger front-rear wheel well mud flap as shown in **Photo 13** with a T15 Torx. Retain hardware for reuse.
13. Remove the three factory bolts holding the passenger rear-rear wheel well mud flap as shown in **Photo 14** with a T15 Torx. Retain hardware for reuse.



14. Remove the three factory bolts holding the passenger rear-rear wheel well mud flap as shown in **Photo 15** with a T15 Torx. Retain hardware for reuse.
15. Use the factory hardware to install the front-rear wheel well cap (94034013). Tighten with a T15 Torx. **See Photo 16.**



16. Use the factory hardware to install the rear-rear wheel well cap (94034015). Tighten with a T15 Torx. **See Photo 17.**
17. Repeat Step 11 through Step 16 for driver side using 94034012 and 94034014



By purchasing any item sold by Rough Country, LLC, the buyer expressly warrants that he/she is in compliance with all applicable, State, and Local laws and regulations regarding the purchase, ownership, and use of the item. It shall be the buyers responsibility to comply with all Federal, State and Local laws governing the sales of any items listed, illustrated or sold. The buyer expressly agrees to indemnify and hold harmless Rough Country, LLC for all claims resulting directly or indirectly from the purchase, ownership, or use of the items.

