

## GM 2014-18 1500/2500/3500 Crew Cab Raptor Style Step Kit

Thank you for choosing Rough Country for all your vehicle needs.

Please read instructions before beginning installation. Check the kit hardware against the kit contents shown below. Be sure you have all needed parts and know where they go.

If question exist, please call us @1-800-222-7023. We will be happy to answer any questions concerning this product.

Check all fasteners for proper torque. Check to ensure for adequate clearance between all components.

Periodically check all hardware for tightness.

### KIT CONTENTS:

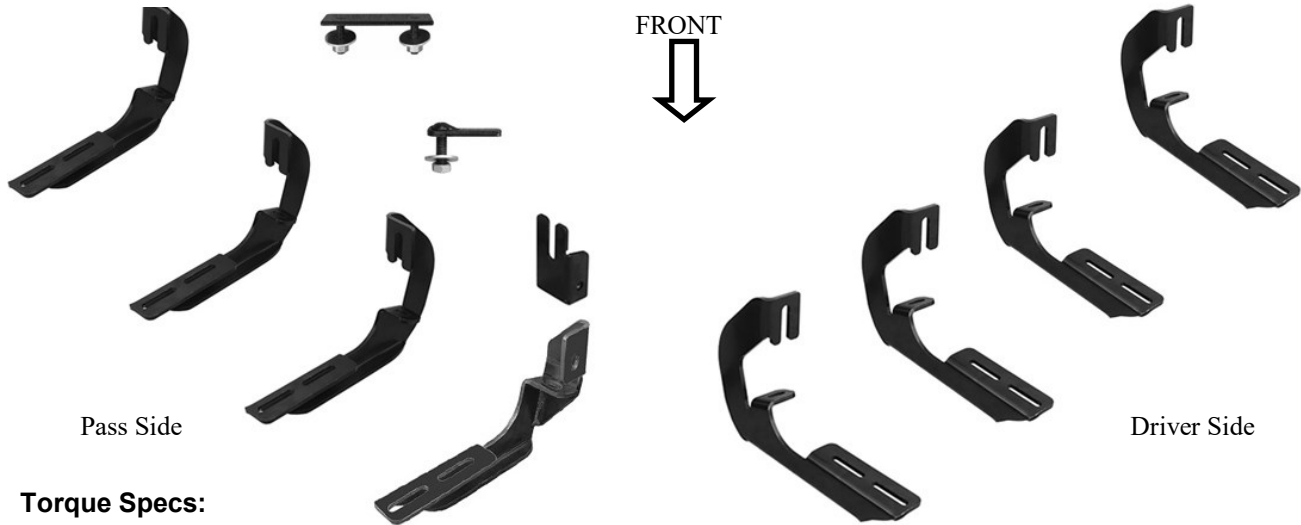
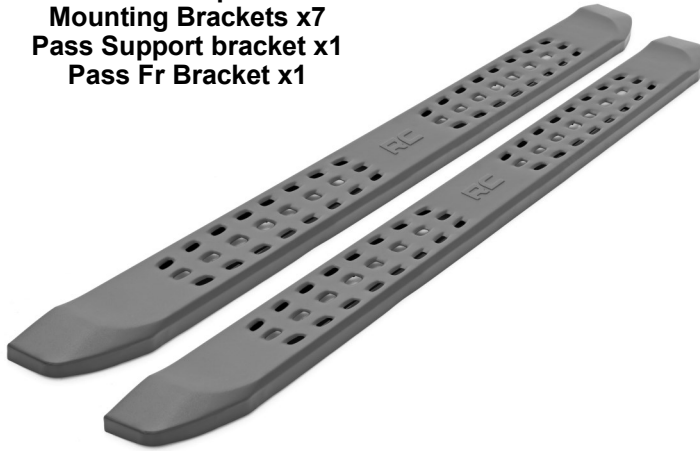
- Driver Side Step Rail x1
- Pass Side Step Rail x1
- Mounting Brackets x7
- Pass Support bracket x1
- Pass Fr Bracket x1

### TOOLS NEEDED:

- 10mm Wrench or Socket
- 13mm Wrench or Socket

### HARDWARE INCLUDED:

- Double Bolt Plate x8
- 6mm Flat Washers x16
- 6mm Lock washers x16
- 6mm Hex Nuts x16
- 8mm x 25mm Hex Bolts x17
- 8mm Lock Washers x 17
- 8mm Flat Washers x17
- 8mm Body Clips x15
- 8mm Lock Nut x1



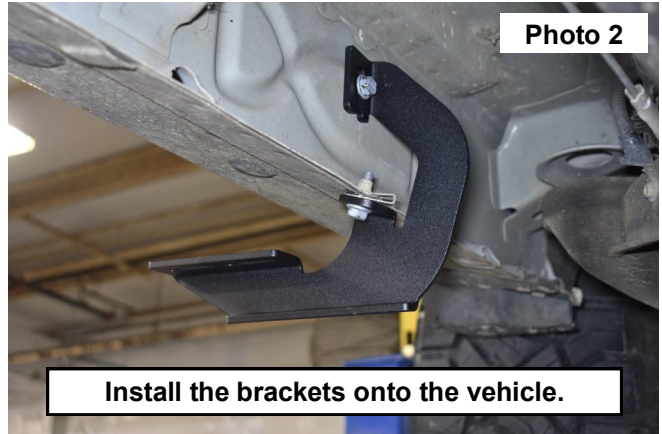
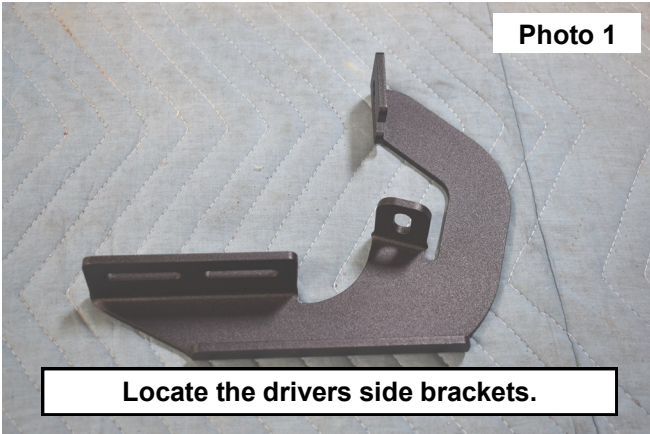
### Torque Specs:

Size	Grade 5	Grade 8	Size	Class 8.8	Class 10.9
5/16"	15 ft/lbs	20ft/lbs	6MM	5ft/lbs	9ft/lbs
3/8"	30 ft/lbs	35ft/lbs	8MM	18ft/lbs	23ft/lbs
7/16"	45 ft/lbs	60ft/lbs	10MM	32ft/lbs	45ft/lbs
1/2"	65 ft/lbs	90ft/lbs	12MM	55ft/lbs	75ft/lbs
9/16"	95 ft/lbs	130ft/lbs	14MM	85ft/lbs	120ft/lbs
5/8"	135ft/lbs	175ft/lbs	16MM	130ft/lbs	165ft/lbs
3/4"	185ft/lbs	280ft/lbs	18MM	170ft/lbs	240ft/lbs

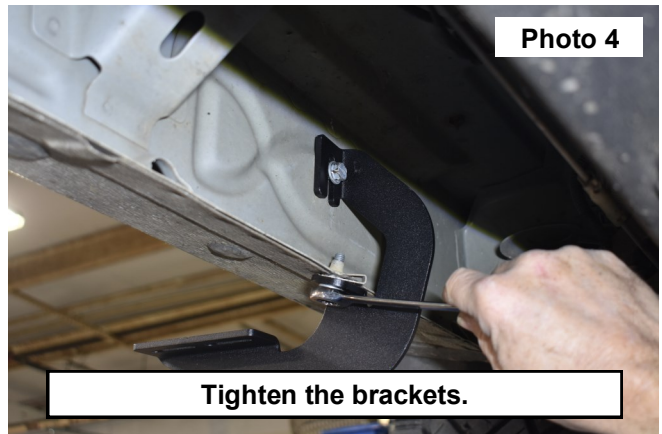
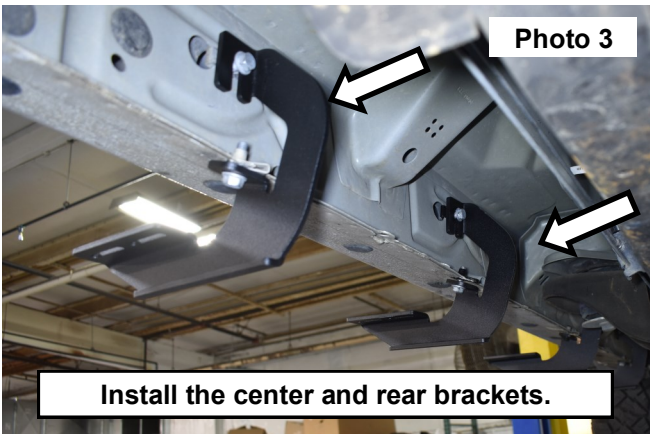


## INSTALLATION INSTRUCTIONS

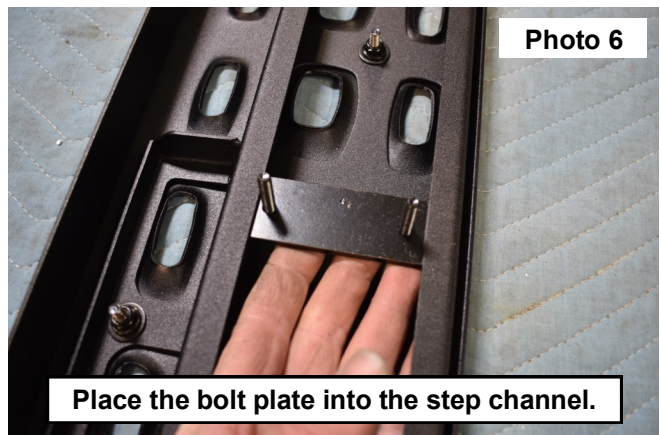
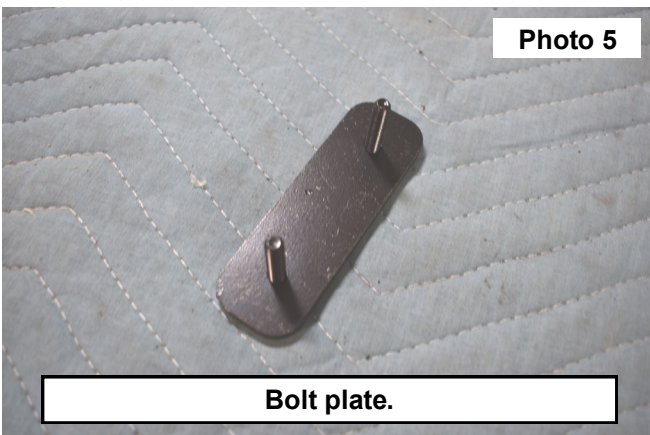
1. Locate the (4) step brackets for the drivers side of the vehicle. **See Photo 1.**
2. Locate the 8mm clip and install onto the lower pinch weld of the rocker. Then place the front bracket onto the rocker and secure using (2) of the supplied 8mm bolts. **See Photo 2.**



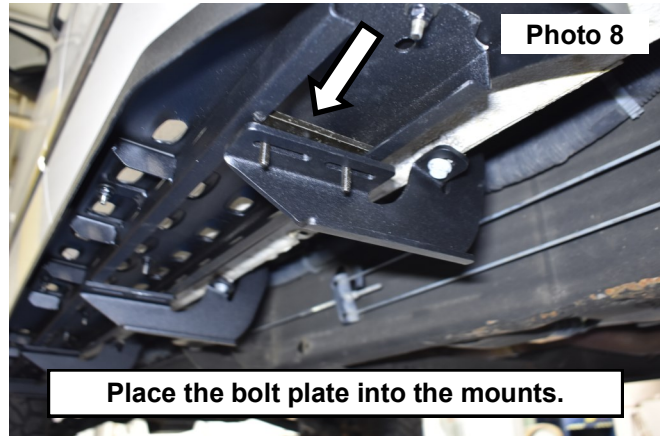
3. Place (2) 8mm clips onto the center and rear mounting locations on the lower pinch weld of the rocker. Then secure the center and rear brackets to the vehicle using (2) of the supplied 8mm bolts. **See Photo 3.**
4. Tighten the (2) bolts using a 13mm wrench or socket. **See Photo 4.**



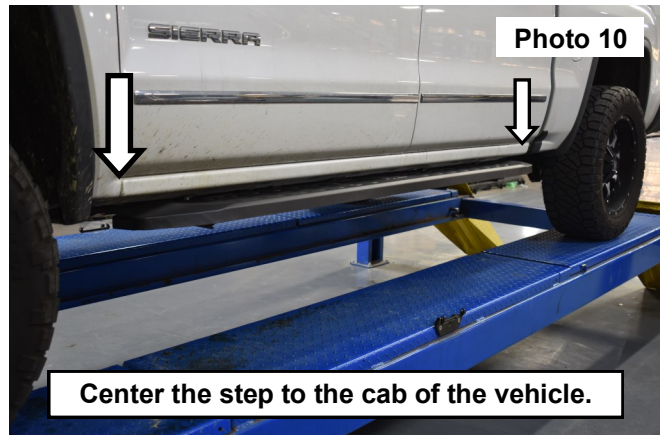
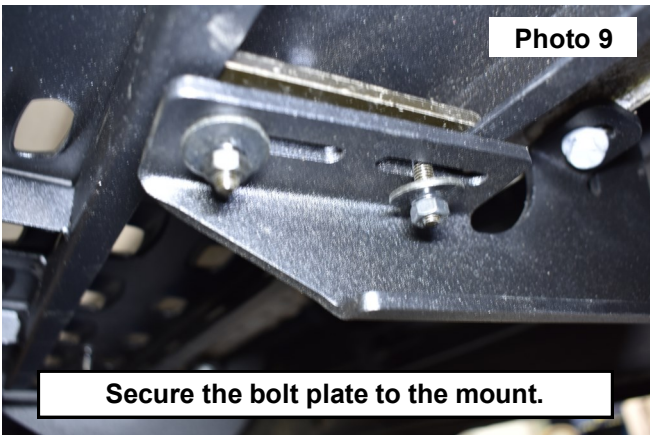
5. Locate (3) bolt plates. **See Photo 5.**
6. Install the (3) bolt plates into the channel of the step. **See Photo 6.**



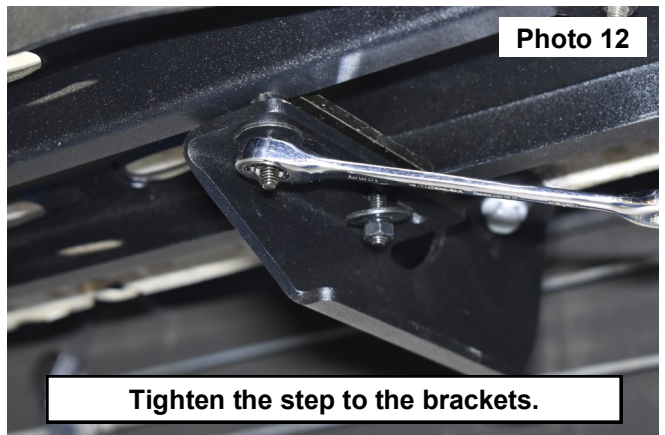
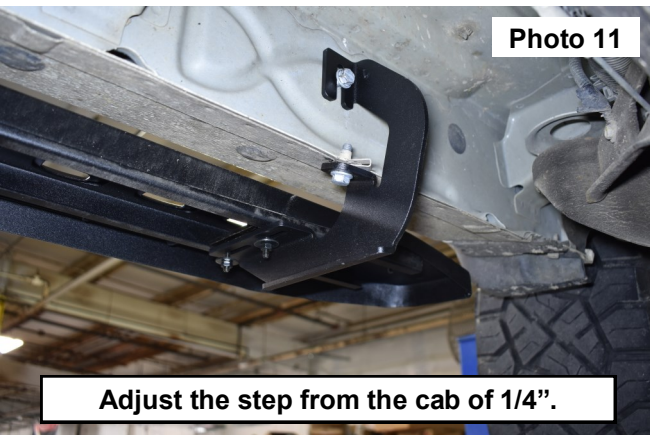
7. Place the step onto the mounts. Slide the bolt plates over the mount and place the bolt plate into the slotted holes. **See Photos 7 and 8.**



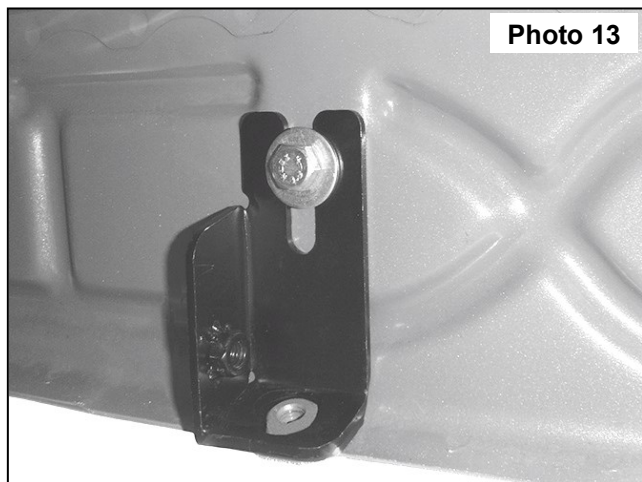
8. Secure the step and bolt plate using (2) of the supplied 6mm flat washers (2) 6mm lock washers and (2) 6mm nuts for each of the (3) mounting brackets. **See Photo 9.**
9. Center the step plate into the desired position. **See Photo 10.**



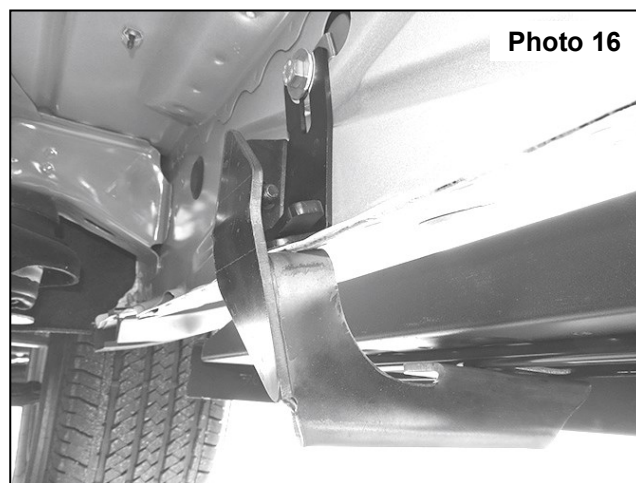
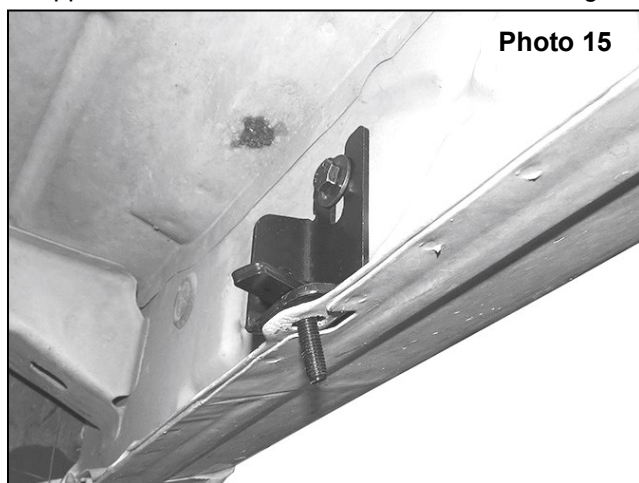
10. Adjust the inside of the step plate within a 1/4" away from the cab of the vehicle. **See Photo 11.**
11. Tighten the hardware using a 10mm wrench on each of the (3) mounting brackets. **See Photo 12.**



12. Locate the passenger front step bracket and support bracket. Install the support bracket as shown in **Photo 13** and install using the supplied 8mm x 25mm bolt, lock washer and flat washer.
13. Locate the supplied flag bolt supplied with the kit. **See Photo 14.**



14. Insert the supplied flag bolt in the support bracket and install the step mount as shown in **Photo 15 & 16** using the supplied 8mm flat washer and 8mm lock nut. Tighten using a 13mm socket.



15. Install the remaining 3 brackets in the factory location as installed on the driver side, Tighten supplied 8mm x 25mm bolts, washers and 8mm lock nuts using a 13mm wrench.
16. As on the driver side position the step board on the brackets and secure to the brackets using the supplied 6mm flat washers and lock nuts. Tighten using a 10mm wrench.
17. Periodically check all hardware to ensure they are tight.





By purchasing any item sold by Rough Country, LLC, the buyer expressly warrants that he/she is in compliance with all applicable, State, and Local laws and regulations regarding the purchase, ownership, and use of the item. It shall be the buyers responsibility to comply with all Federal, State and Local laws governing the sales of any items listed, illustrated or sold. The buyer expressly agrees to indemnify and hold harmless Rough Country, LLC for all claims resulting directly or indirectly from the purchase, ownership, or use of the items.

