

ROUGH COUNTRY
SUSPENSION SYSTEMS®

921510030



51003BAG1

27.11
(688.7 mm)

2008-16 FORD F-250 Traction Bar Kit

Thank you for choosing Rough Country for all your vehicle needs.

Please read instructions before beginning installation. Check the kit hardware against the kit contents shown below. Be sure you have all needed parts and know where they go.

If question exist, please call us @1-800-222-7023. We will be happy to answer any questions concerning this product.

Check all fasteners for proper torque. Check to ensure for adequate clearance between all components.

Check and retighten wheels at 50 miles and again at 500 miles. Periodically check all hardware for tightness.

KIT CONTENTS:

- 2-Traction bars
- 2- Axle brackets
- 2- Threaded joints
- 1-Drivers side bracket
- 1- Passengers side bracket
- 1- Passengers side frame gusset

TOOLS NEEDED:

- 15mm wrench or socket
- 19mm wrench and socket
- 22mm wrench and socket
- 1 1/8 wrench
- Drill motor
- 3/764 drill
- Ratchet
- Wheel chocks

HARDWARE INCLUDED:

- 9-M14-2.0x40mm Bolts
- 4-M14-2.0x100mm Bolts
- 13-M14-2.0 Nuts
- 26- 9/16 SAE Flat washers
- 3-M12-1.75x35mm bolts
- 3-M12mm-1.75 Nuts
- 6- 7/16 SAE Flat washers
- 2-1" Jam Nuts

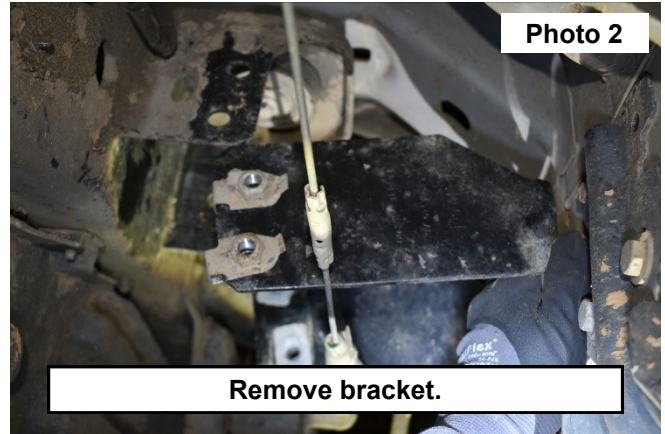
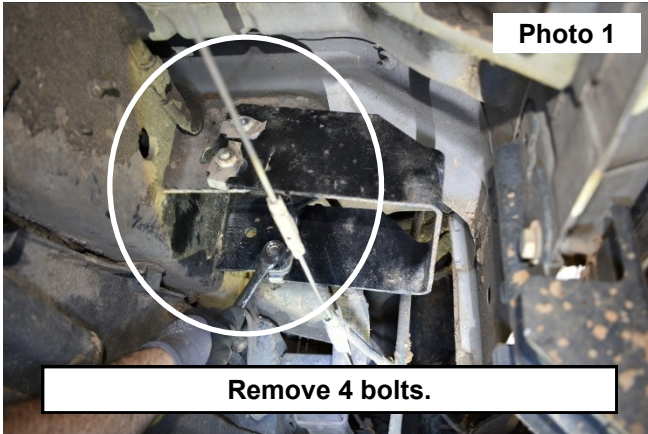


Torque Specs:

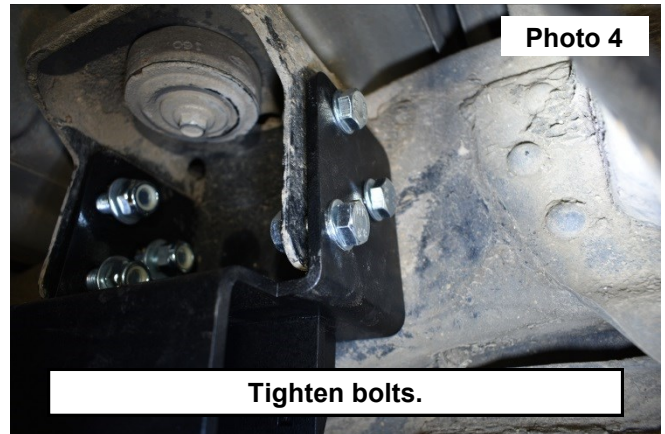
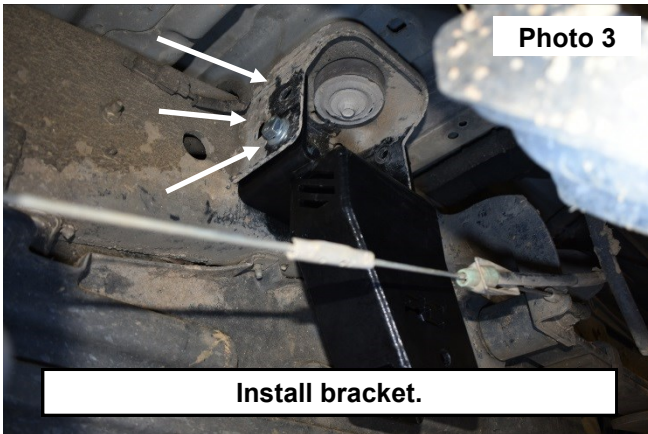
Size	Grade 5	Grade 8	Size	Class 8.8	Class 10.9
5/16"	15 ft/lbs	20ft/lbs	6MM	5ft/lbs	9ft/lbs
3/8"	30 ft/lbs	35ft/lbs	8MM	18ft/lbs	23ft/lbs
7/16"	45 ft/lbs	60ft/lbs	10MM	32ft/lbs	45ft/lbs
1/2"	65 ft/lbs	90ft/lbs	12MM	55ft/lbs	75ft/lbs
9/16"	95 ft/lbs	130ft/lbs	14MM	85ft/lbs	120ft/lbs
5/8"	135ft/lbs	175ft/lbs	16MM	130ft/lbs	165ft/lbs
3/4"	185ft/lbs	280ft/lbs	18MM	170ft/lbs	240ft/lbs



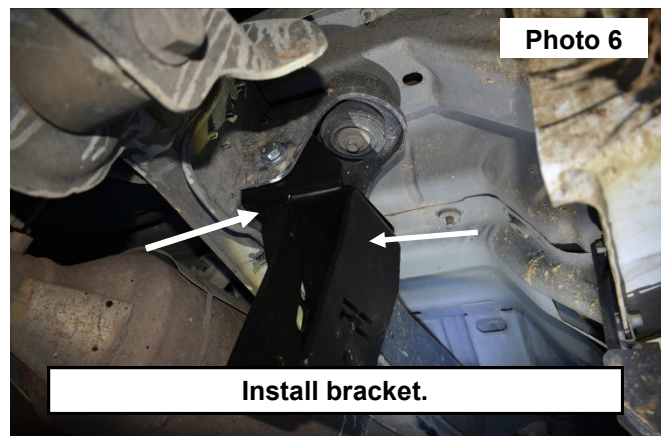
1. Remove the 4 bolts from the inside of bracket on the drivers side body mount, using a 15mm wrench. **See Photo 1.**
2. Remove bracket. **See Photo 2.**



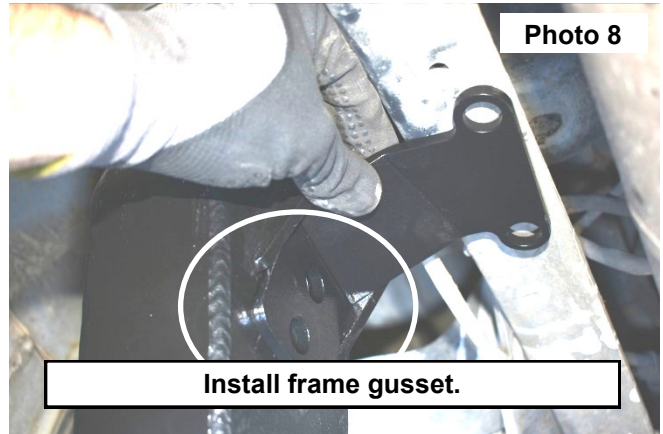
3. Install the traction bar bracket on the inside of the front of the drivers side body mount, Using (3) M14-2.0x40 bolts, washers and nuts, attaching it to the front side of the body mount. Torque to 120ft-lbs, using a 22mm socket and wrench. **See Photo 3.**
4. Use (3) M12-1.75x35 bolts, washers and nuts attaching it to the body mount, Torque to 55ft-lbs, using a 19mm socket and wrench.. **See Photo 4.**
5. Remove the line retainer from the frame, this will be relocated in the traction bar bracket. **See Photo 5.**



6. Install the traction bar bracket inside the passengers side body mount, using (2) M14-2.0x40 bolts do not tighten at this time. **See Photo 6.**
7. Push the line retainer into the hole located in between the gussets on the traction bar bracket. **See Photo 7.**

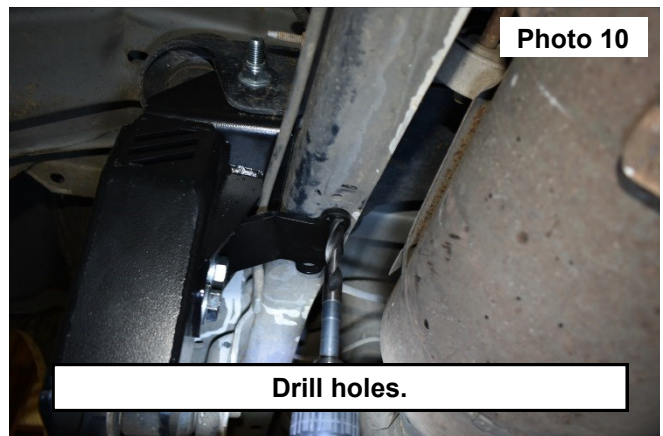
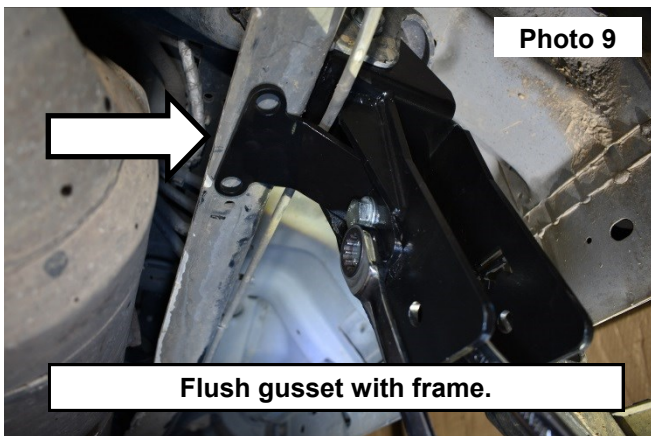


8. Slide the frame brace in between the gussets, installing the (2) M14-2.0x40 bolts, washers and nuts. **See Photo 8.**
9. Tighten the (4) M14-2.0x40 bolts that have been installed in the bracket and gusset, **make sure the top of the**



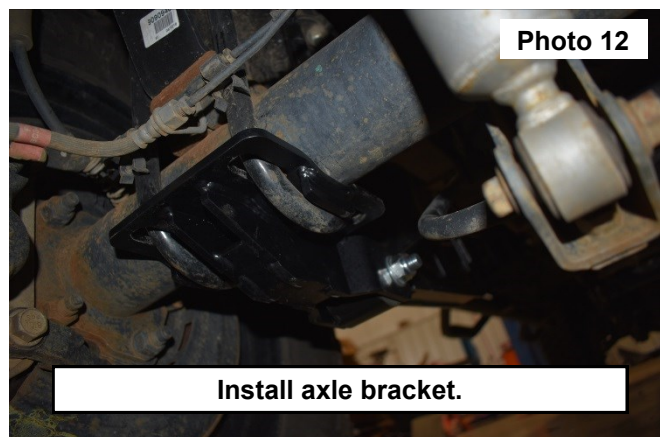
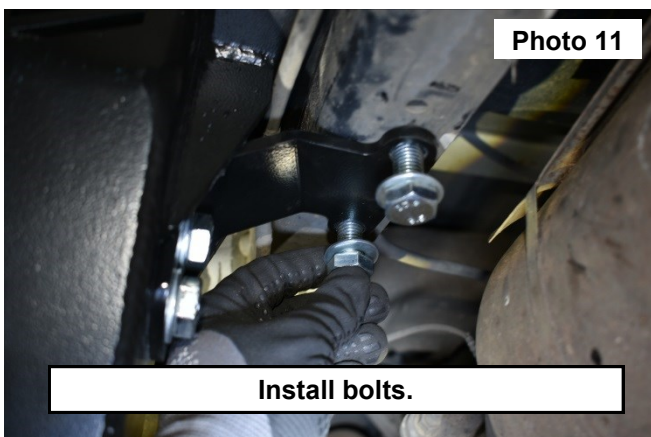
frame gusset and the bottom of the frame are flush with one another, Torque to 120ft-lbs, using a 22mm socket and wrench. See Photo 9.

10. Using the frame gusset as a template drill the 2 holes in the frame, using a 37/64 drill. **See Photo 10.**
11. Install (2) M14-2.0x40 bolts, washers and nuts into the holes drilled into the frame, Torque to 120ft-lbs, using a

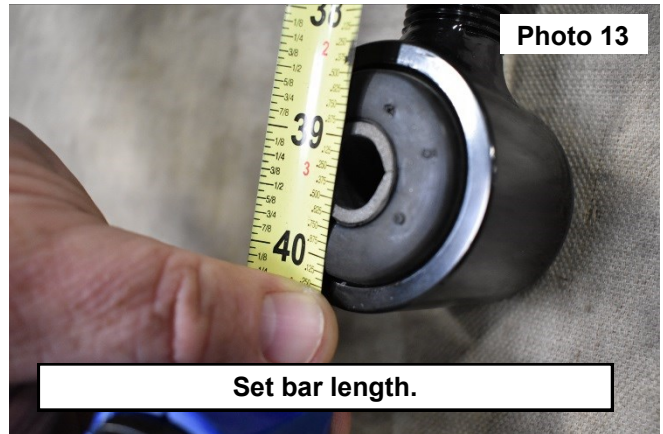
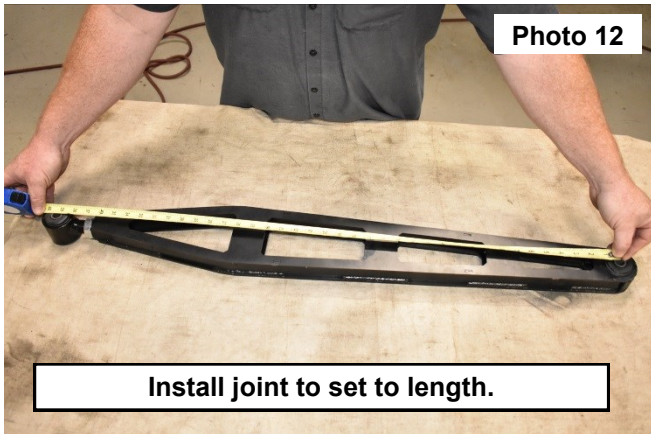


22mm socket and wrench. **See Photo 11.**

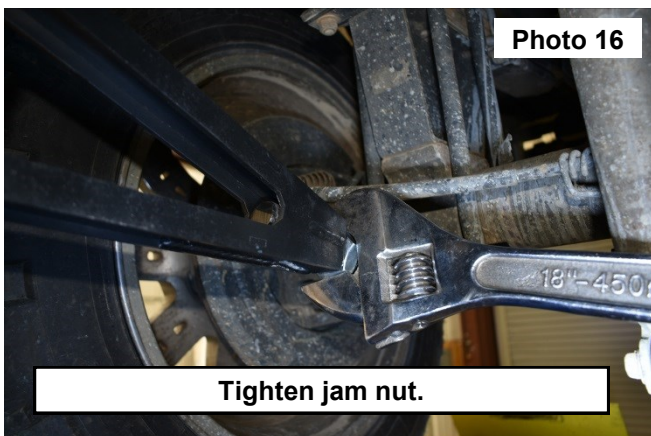
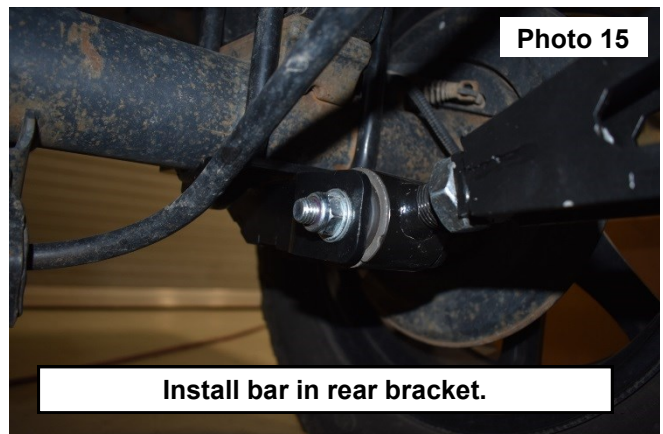
12. Install the U-bolts through the holes in the axle bracket, **make sure the axle bracket is level then torque U-bolts to spec. See Photo 12.**
13. Install the jam nut on the threaded joint and install in the traction bar.



14. **The traction bars must be installed with the truck on the ground.**
15. **▲ NOTICE** bar at a starting length of 39.250 center to center of bushings. **See Photo 12 and 13.**
16. Installing the traction bars on the driver and passengers side in the front mount using the M14-2.0x100 bolt, washers



- and nut, do not tighten at this time. **See Photo 14.**
17. Install the rear of the traction bar, using the M14-2.0x100 bolt, washers and nut. **See Photo 15.**
 18. Torque the traction bar bolts in the frame mount and the axle mount to 85ft-lbs, using a 22mm socket and wrench.
 19. Tighten the jam nuts, using a 1 1/8" wrench. **See Photo 16.**



By purchasing any item sold by Rough Country, LLC, the buyer expressly warrants that he/she is in compliance with all applicable , State, and Local laws and regulations regarding the purchase, ownership, and use of the item. It shall be the buyers responsibility to comply with all Federal, State and Local laws governing the sales of any items listed, illustrated or sold. The buyer expressly agrees to indemnify and hold harmless Rough Country, LLC for all claims resulting directly or indirectly from the purchase, ownership, or use of the items.

