

21 and Up Bronco Bumper Cube Mount

Thank you for choosing Rough Country for all of your suspension needs.

Rough Country recommends that a certified technician install this system. In addition to these instructions, professional knowledge of disassemble/reassembly procedures as well as post installation checks must be known. Attempts to install this system without this knowledge and expertise may jeopardize the integrity and/or operating safety of the vehicle. Please read all the instructions before beginning the installation. Check the kit hardware against the "Kit Contents" list below. If question exist, please call us @1-800-222-7023. We will be happy to answer any questions concerning this product. Check all fasteners for proper torque. Check to ensure for adequate clearance between all components. Check and retighten wheels at 50 miles and again at 500 miles. Periodically check all hardware for tightness. Be sure you have all the needed parts and understand where they go. Also, please review the "Tools Needed" list to be certain you have the necessary tools to complete the installation.

PRODUCT USE INFORMATION

⚠ WARNING As a general rule, the taller a vehicle is the easier it will roll. We strongly recommend that seat belts and shoulder harnesses be worn at all times. Braking performance and capabilities are decreased when significantly larger/heavier tires and wheels are used. Do not add, alter, or fabricate any factory or after-market parts which increase vehicle height over the intended height of the Rough Country product purchased. Rough Country makes no claims regarding lifting devices and excludes any and all implied claims. We will not be responsible for any product that is altered.

NOTICE TO DEALER AND VEHICLE OWNER

⚠ NOTICE Any vehicle equipped with any Rough country product must have the "Warning to Driver" decal installed on the sun visor or dash. The decal is to act as a constant reminder for whoever is operating the vehicle of its unique handling characteristics. **INSTALLING DEALER**—It is your responsibility to install the warning decal and to forward these installation instructions on too the vehicle owner for review and to be kept in the vehicle for its service life.



21 and Up Bronco Bumper Cube Mount

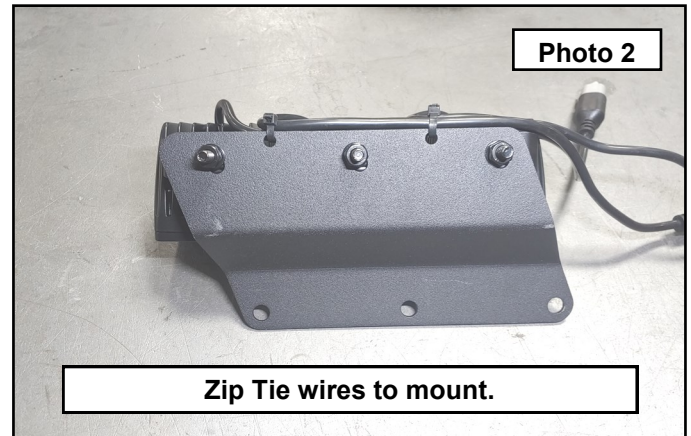
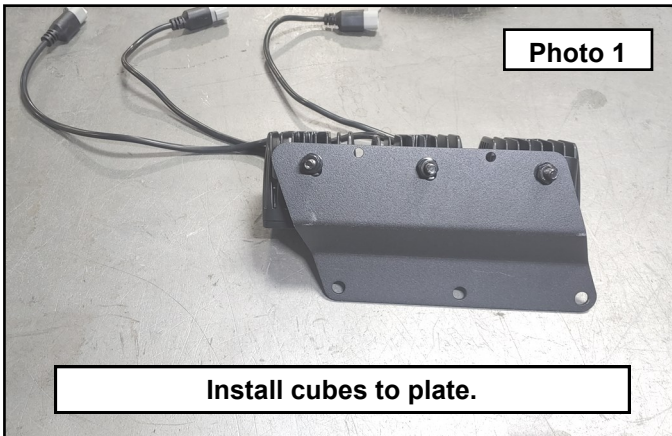
TOOLS NEEDED:
Torx-T35

KIT CONTENTS:
Driver Mount
Pass Mount

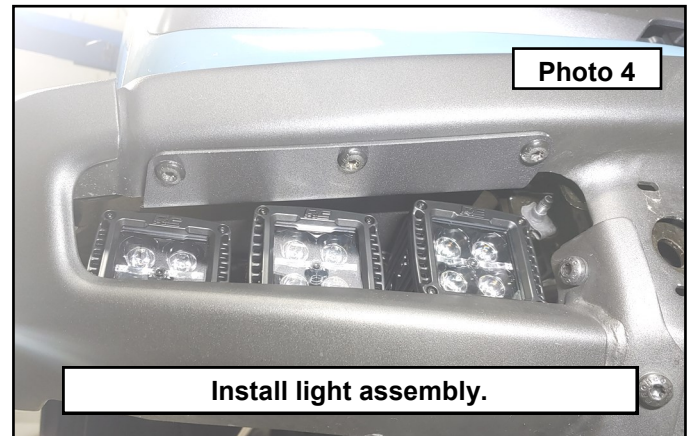
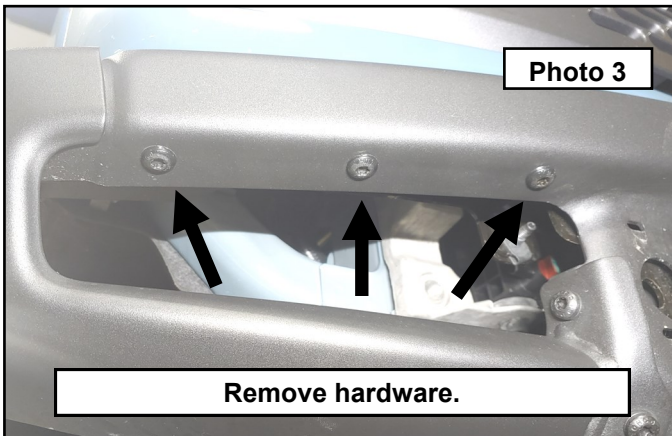


Cube Mount Installation

1. Park your vehicle on a clean flat surface, engage the parking brake and block the rear tires.
2. **Save all hardware removed from the vehicle unless otherwise noted.**
3. Open the hood and disconnect the negative terminal on the battery.
4. Install your lights to the Rough Country brackets at an angle as shown. All the mounts are adjustable for preference once in the vehicle. Passenger side shown. **Photo 1**
5. Use zip ties if desired to attach the light harnesses to the mounts as shown. **Photo 2**



6. Remove the 3 Torx head bolts from both sides of the wings on the bumper using a T35. **Photo 3**
7. Slide the assembled brackets into place from behind the bumper and install using the factory hardware. Adjust the lights to suit your preference. Tighten all the hardware. **Photo 4**



Run the wiring to suit. If your vehicle is equipped with the factory auxiliary switch panel, you can wire the lights to this using the pigtail under the hood on the driver side firewall. It is suggested that you retain the relay set up that comes with the light kit. Cut the switch off the harness and use the trigger wire and attach to the factory harness. You can also purchase the MLC6 option offering for the Bronco from Rough Country made specifically to tie to the factory auxiliary panel and wire harness. This will keep all your harnesses neat and tidy and offer superior protection against battery drain due to the auto drain feature. **DO NOT** tie all 6 lights to one harness. You can tie the harnesses to one switch, but make sure to use all the relays from each kit.





By purchasing any item sold by Rough Country, LLC, the buyer expressly warrants that he/she is in compliance with all applicable , State, and Local laws and regulations regarding the purchase, ownership, and use of the item. It shall be the buyers responsibility to comply with all Federal, State and Local laws governing the sales of any items listed, illustrated or sold. The buyer expressly agrees to indemnify and hold harmless Rough Country, LLC for all claims resulting directly or indirectly from the purchase, ownership, or use of the items.