

921707850

# ROUGH COUNTRY

SUSPENSION SYSTEMS®

## 2014 -18 TOYOTA 4 Runner 30" Bumper

Thank you for choosing Rough Country for all your vehicle needs.

Please read instructions before beginning installation. Check the kit hardware against the kit contents shown below. Be sure you have all needed parts and know where they go.

If question exist, please call us @1-800-222-7023. We will be happy to answer any questions concerning this product.

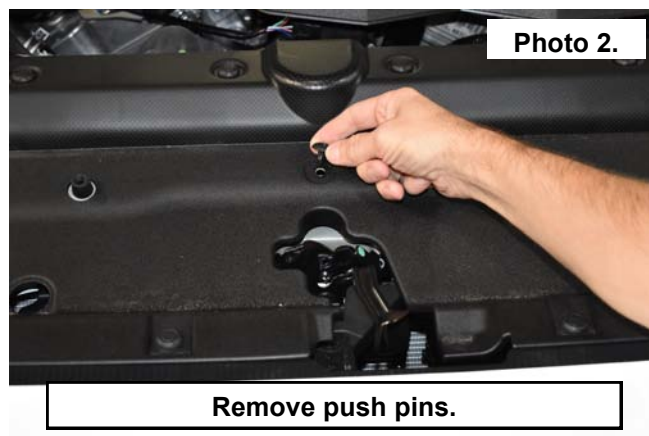
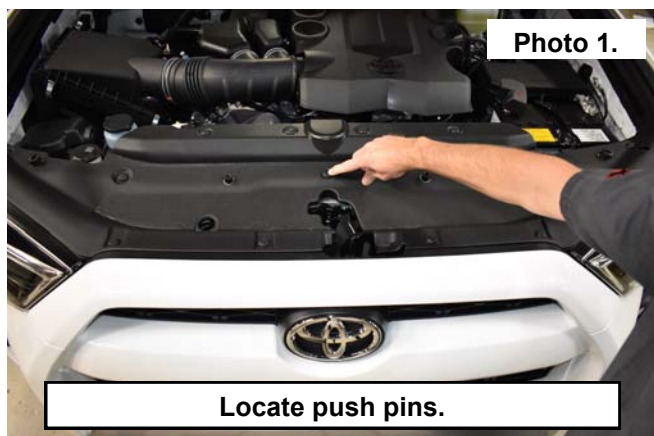
**Kit Contents:**  
1-Driver Bracket  
1-Pass Bracket  
1-30" LED Light Bar

**Tools needed:**  
9/16" Socket/ Wrench  
10MM Socket  
Ratchet  
Small Flat Screw Driver

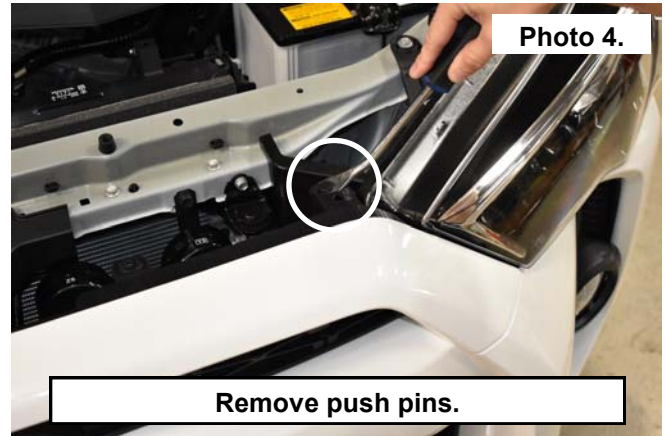
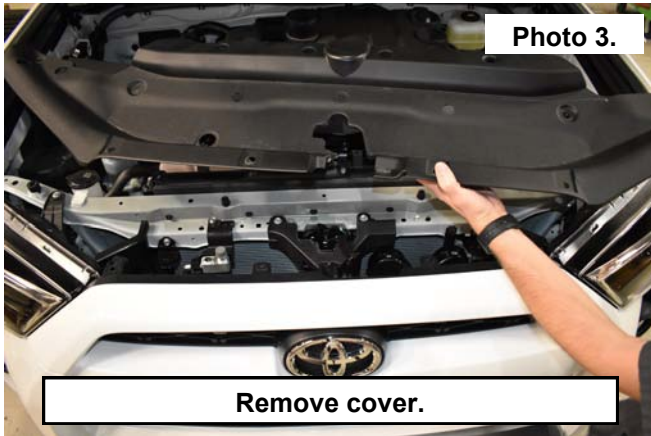
**Hardware:**  
4-3/8" x 1" Bolts  
4-3/8" Nylock Nuts  
8-3/8" SAE Flat Washers



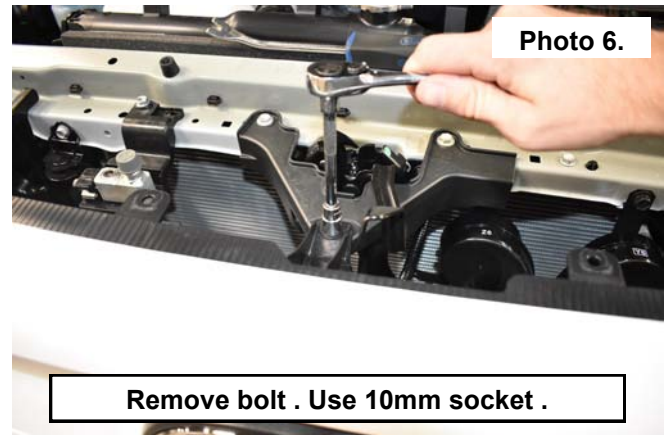
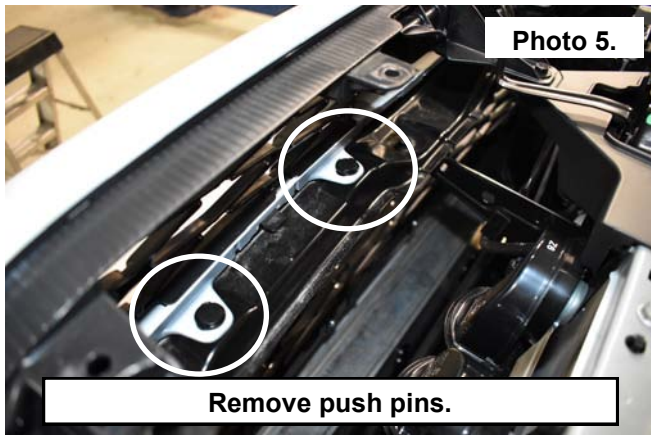
1. Locate the 9 push pins in the radiator cover. **See Photo 1.**
2. Lift the center of the push pin up to remove the push pin from the radiator cover. Retain hardware. **See Photo 2.**



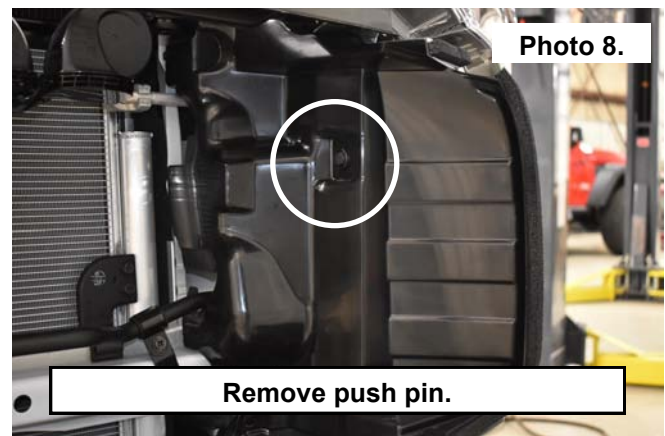
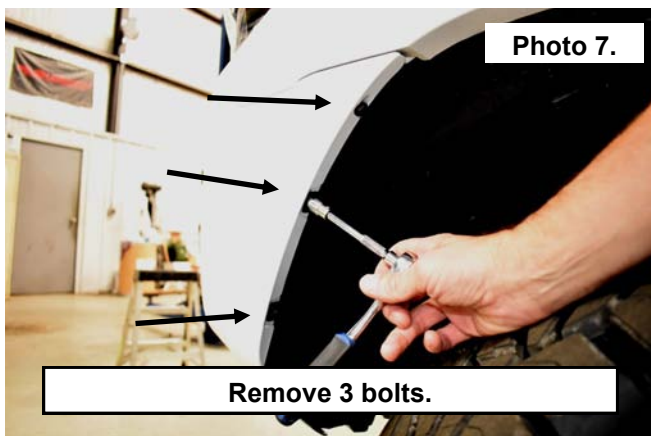
3. Remove the radiator cover . **See Photo 3.**
4. Remove the 2 push pins, on both sides of the grill by the headlights, using a small flat head screw driver. **See Photo 4.**



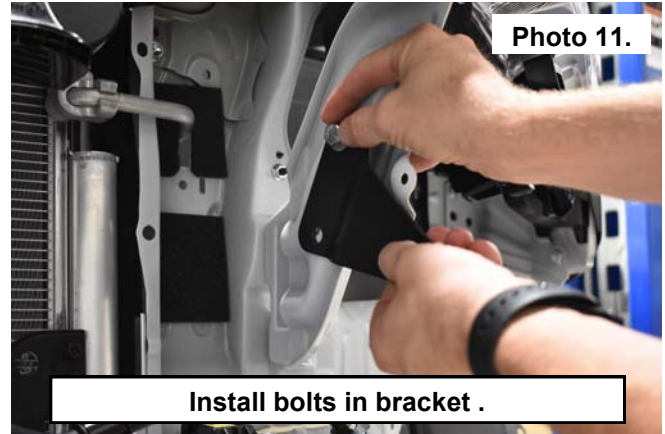
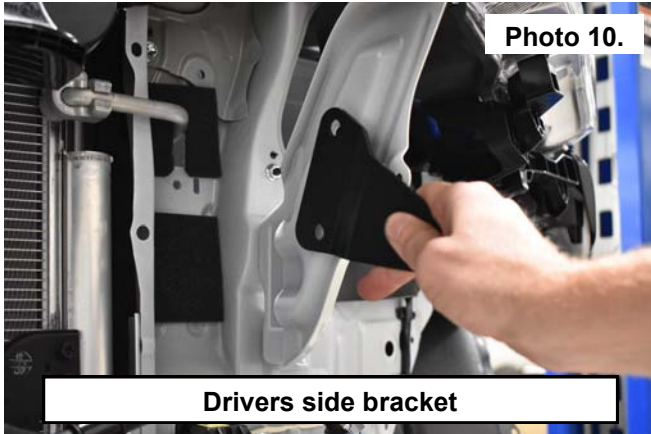
5. Locate the 2 push pins inside of the grill and remove, using a small flat head screw driver. **See Photo 5.**
6. Remove the center bolt from the grill using a 10mm socket. Retain hardware. **See Photo 6.**



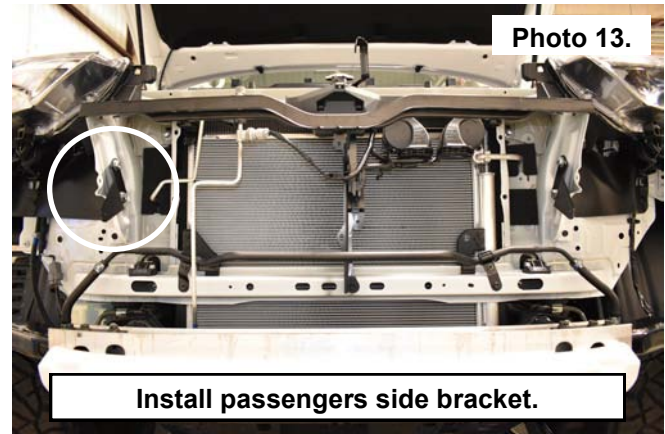
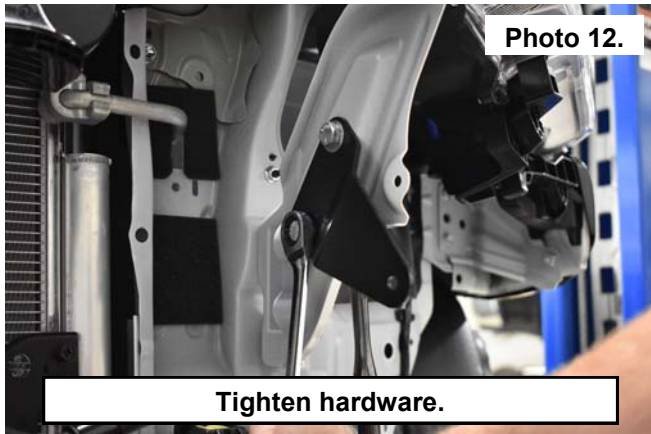
7. Remove the 3 bolts in each side of the front bumper using a 10mm socket. **See Photo 7.** Retain hardware.
8. At this time remove the front bumper from the vehicle.
9. Remove the push pin from the 2 side panels and remove using a small flat head screw driver. **See Photo 8.** These will not be reused.



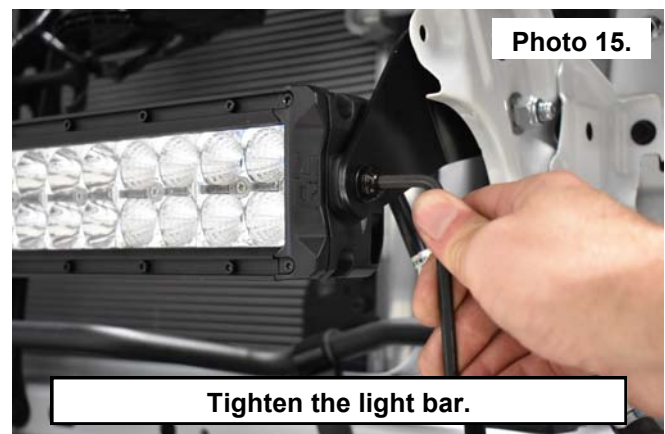
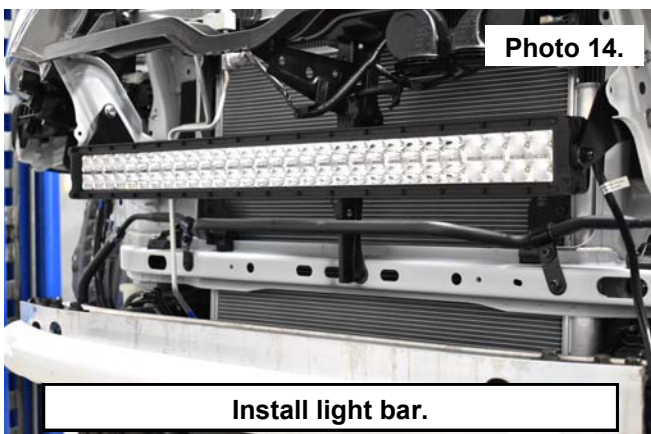
10. Place the Drivers side light bracket on the inside of the radiator support. **See Photo 10.**
11. Place the supplied 3/8x1" bolts and washers into the bracket and the radiator support. Secure using the supplied 3/8 washer and nut. **See Photo 11.**



12. Using 9/16 wrenches tighten hardware in the bracket. **See Photo 12.**
13. Install the passengers side bracket. **See Photo 13.**
14. Place the supplied 3/8x1" bolts and washers into the bracket and the radiator support. Secure using the supplied 3/8 washer and nut.
15. Using 9/16 wrenches tighten hardware.



16. Using the supplied (with the light) hardware install the 30 inch light bar in between the brackets. **See Photo 14.**
17. Tighten the bolts in each end of the light using the supplied allen wrench. **See Photo 15.**



18. At this time follow the instructions supplied with the light to wire the light to the vehicle.
19. After the light has been wired. Reverse steps 1-7 to install the front bumper.

By purchasing any item sold by Rough Country, LLC, the buyer expressly warrants that he/she is in compliance with all applicable , State, and Local laws and regulations regarding the purchase, ownership, and use of the item. It shall be the buyers responsibility to comply with all Federal, State and Local laws governing the sales of any items listed, illustrated or sold. The buyer expressly agrees to indemnify and hold harmless Rough Country, LLC for all claims resulting directly or indirectly from the purchase, ownership, or use of the items.

