

ROUGH COUNTRY

SUSPENSION SYSTEMS®

FORD 2004-14 F150/99-16 SUPERDUTY TAILGATE ASSIST

Thank you for choosing Rough Country for all your vehicle needs.

Please read instructions before beginning installation. Check the kit hardware against the kit contents shown below. Be sure you have all needed parts and know where they go.

If question exist, please call us @1-800-222-7023. We will be happy to answer any questions concerning this product. Check all fasteners for proper torque. Check to ensure for adequate clearance between all components. Periodically check all hardware for tightness.

KIT CONTENTS:

- 1 - Tailgate Assist Piston
- 1 - Tailgate Cable Bracket
- 2 - Spacer (Super Duty Kits Only)

Hardware Included:

- 1 - Riv-nut
- 1 - Threaded ball Insert
- 1 - 5/16" Large Washer (F150 Kits Only)

Tools Required:

- T-50 Torx
- 17/32 Drill
- Drill Motor
- 13mm Wrench
- Nut Insert Tool (optional)



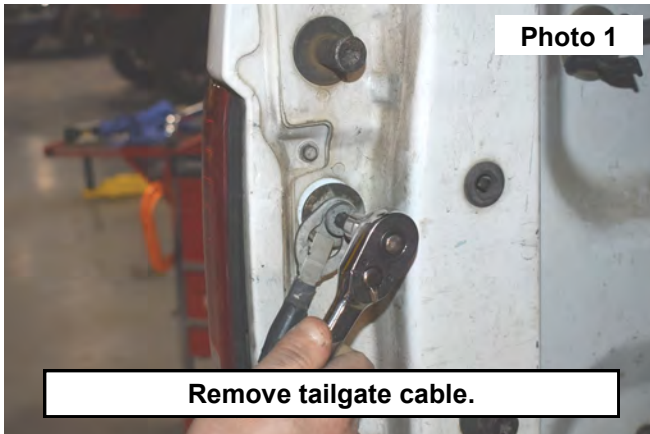
Torque Specs:

Size	Grade 5	Grade 8	Size	Class 8.8	Class 10.9
5/16"	15 ft/lbs	20ft/lbs	6MM	5ft/lbs	9ft/lbs
3/8"	30 ft/lbs	35ft/lbs	8MM	18ft/lbs	23ft/lbs
7/16"	45 ft/lbs	60ft/lbs	10MM	32ft/lbs	45ft/lbs
1/2"	65 ft/lbs	90ft/lbs	12MM	55ft/lbs	75ft/lbs
9/16"	95 ft/lbs	130ft/lbs	14MM	85ft/lbs	120ft/lbs
5/8"	135ft/lbs	175ft/lbs	16MM	130ft/lbs	165ft/lbs
3/4"	185ft/lbs	280ft/lbs	18MM	170ft/lbs	240ft/lbs

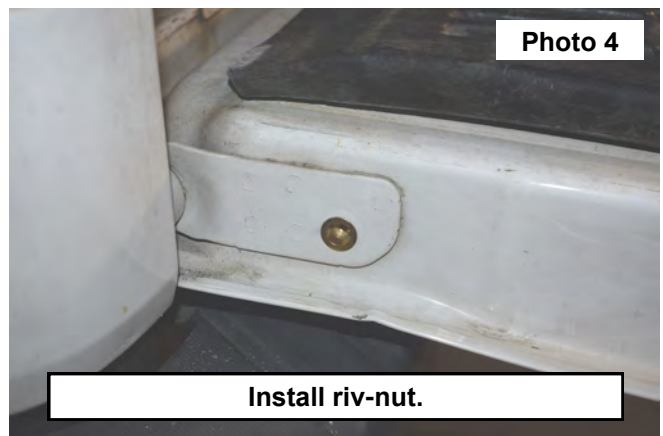
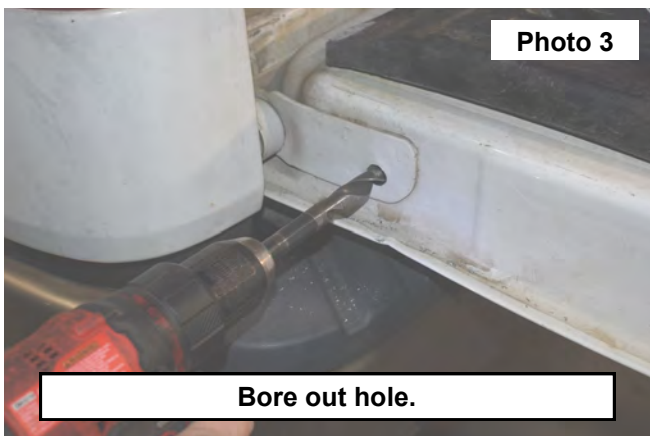


F150 INSTALLATION INSTRUCTIONS

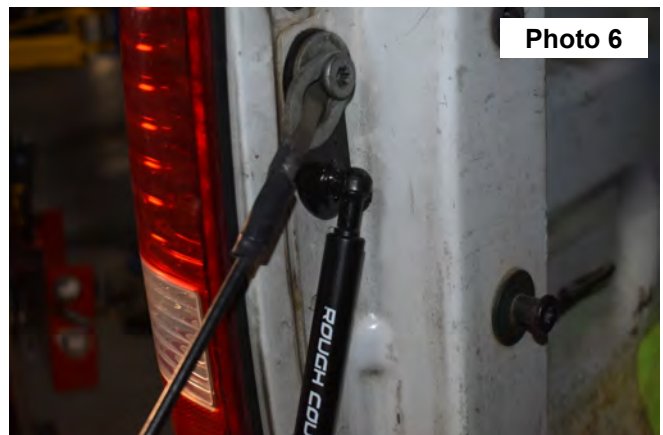
1. Unbolt the tailgate cable with a T50 Torx. Set cable, washer, and bolt aside. **See Photo 1.**
2. Install the tailgate cable bracket by placing it under the factory tailgate washer and bolt. Place tailgate cable back on the factory bolt. Tighten with a T50 Torx. **See Photo 2.**
3. Use a 17/32 drill to bore out the hole in the tailgate. **See Photo 3.**



4. Place supplied riv-nut in previously bored hole. To secure, use either a riv-nut tool (not included) or expand using the supplied 5/16" bolt, nut and washer. Place the washer and nut on the bolt and thread the assembly into the riv-nut. Hold the bolt head still and turn the nut to fasten the riv-nut. **See Photo 4.**

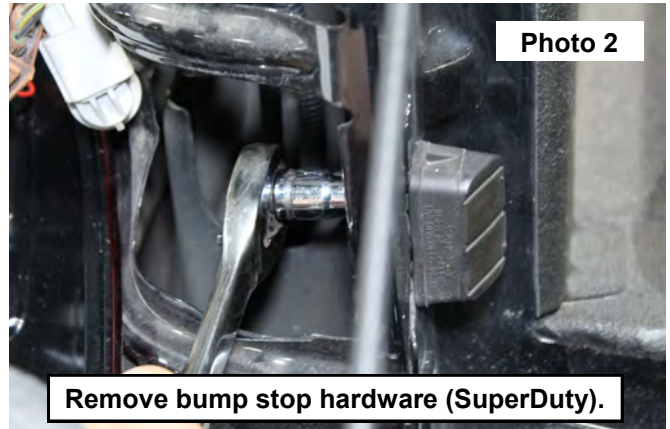


5. Thread the pivot pin and washer into the previously installed riv-nut. Tighten with a 13mm wrench. **See Photo 5.**
6. Install the tailgate piston with the cylinder going towards the bracket side and the piston going to the tailgate side. **See Photo 6.**



SUPERDUTY EXTRA STEPS

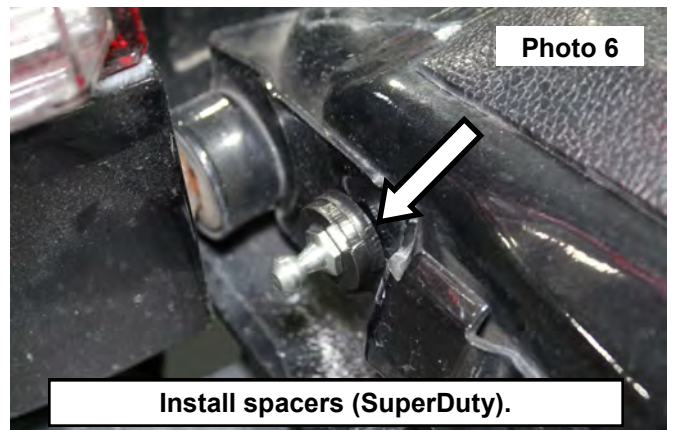
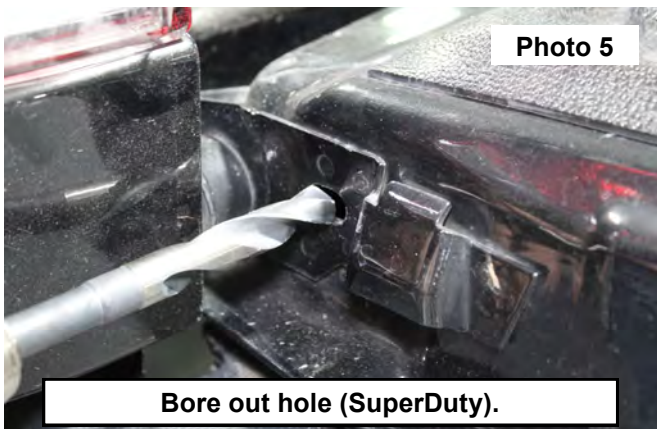
1. Remove the two bolts holding the taillight housing with a 10mm wrench. Retain hardware for reuse. Pull the taillight housing out. **See Photo 1.**
2. Use a 12mm socket to remove the two nuts holding the tailgate bump stop. Remove bump stop from vehicle. **See Photo 2.**
3. Reinstall taillight housing using factory hardware.



4. Unbolt the tailgate cable with a T50 Torx. Set cable, washer, and bolt aside. **See Photo 3.**
5. Install the tailgate cable bracket by placing it under the factory tailgate washer and bolt. Place tailgate cable back on the factory bolt. Tighten with a T50 Torx. **See Photo 4.**



6. Use a 17/32 drill to bore out the hole in the tailgate. **See Photo 5.**
7. Place supplied riv-nut in previously bored hole. To secure, use either a riv-nut tool (not included) or expand using the supplied 5/16" bolt, nut and washer. Place the washer and nut on the bolt and thread the assembly into the riv-nut. Hold the bolt head still and turn the nut to fasten the riv-nut.
8. Thread the pivot pin and washer into the previously installed riv-nut. Tighten with a 13mm wrench. Install supplied spacers if needed. **See Photo 6.**



9. Install the tailgate piston with the cylinder going towards the bracket side and the piston going to the tailgate side.
See Photo 7.



POST INSTALLATION INSTRUCTIONS

1. Check all fasteners for proper torque. Check to ensure for adequate clearance between all rotating, mobile, fixed, and heated members. Verify clearance between exhaust and brake lines, fuel lines, fuel tank, floorboards, and wiring harness.
2. All kit components must be retightened at 500 miles and then every 300 miles after installation. Periodically check all hardware for tightness.

By purchasing any item sold by Rough Country, LLC, the buyer expressly warrants that he/she is in compliance with all applicable, State, and Local laws and regulations regarding the purchase, ownership, and use of the item. It shall be the buyers responsibility to comply with all Federal, State and Local laws governing the sales of any items listed, illustrated or sold. The buyer expressly agrees to indemnify and hold harmless Rough Country, LLC for all claims resulting directly or indirectly from the purchase, ownership, or use of the items.

