

ROUGH COUNTRY

SUSPENSION SYSTEMS®

GM 2016-22 2500 Steering Stabilizer Kit

Thank you for choosing Rough Country for all your vehicle needs.

Please read instructions before beginning installation. Check the kit hardware against the kit contents shown below. Be sure you have all needed parts and know where they go.

If question exist, please call us @1-800-222-7023. We will be happy to answer any questions concerning this product. Check all fasteners for proper torque. Check to ensure for adequate clearance between all components. Periodically check all hardware for tightness.

Kit Contents:

- 1 - 81134 Bolt and Taper Sleeve
 - 1 - 1/2" x 3 1/2" Bolt
 - 1 - 1/2" Lock Washer
 - 1 - 1/2" Hex Nut
 - 1 - 1/2" Flat Washer
 - 2 - 1/2" Thick Washers
 - 1 - Tapered Sleeve
 - 1 - 1/2" ID Sleeve
- 1 - Instruction Sheet
- 1 - N3 or V2 Shock Pair

- 1 - 87311Bag
 - 1 - 12mm x 65mm Bolt
 - 1 - 12mm Flange Lock Nut
 - 1 - Sleeve
- 1 - 87301Bag
 - 1 - 12mm x 120mm Bolt
 - 2 - 12mm Flat Washers
 - 1 - 12mm Lock Nut
 - 2 - 18mm Flat Washers
 - 1 - 3.8" Long Sleeve

Tools Needed:

- 18mm Socket/Wrench
- 19mm Socket/Wrench
- 27mm Socket/Wrench



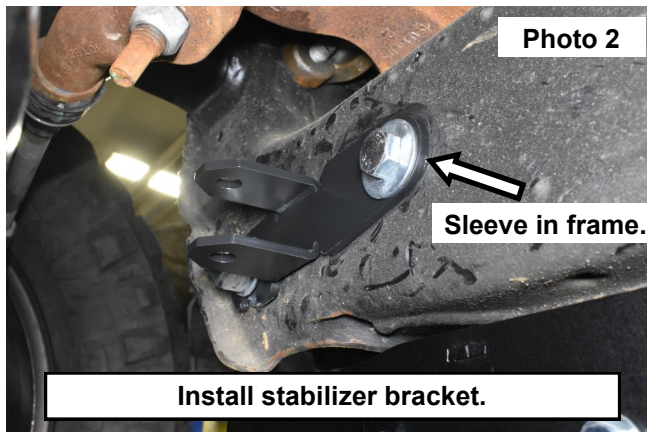
Torque Specs:

Size	Grade 5	Grade 8	Size	Class 8.8	Class 10.9
5/16"	15 ft/lbs	20ft/lbs	6MM	5ft/lbs	9ft/lbs
3/8"	30 ft/lbs	35ft/lbs	8MM	18ft/lbs	23ft/lbs
7/16"	45 ft/lbs	60ft/lbs	10MM	32ft/lbs	45ft/lbs
1/2"	65 ft/lbs	90ft/lbs	12MM	55ft/lbs	75ft/lbs
9/16"	95 ft/lbs	130ft/lbs	14MM	85ft/lbs	120ft/lbs
5/8"	135ft/lbs	175ft/lbs	16MM	130ft/lbs	165ft/lbs
3/4"	185ft/lbs	280ft/lbs	18MM	170ft/lbs	240ft/lbs

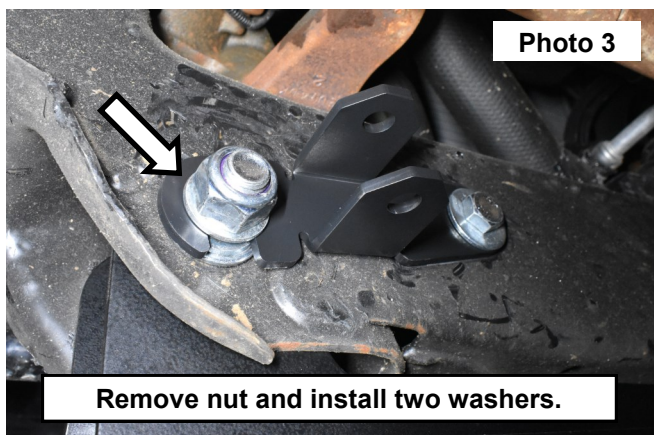


INSTALLATION INSTRUCTIONS

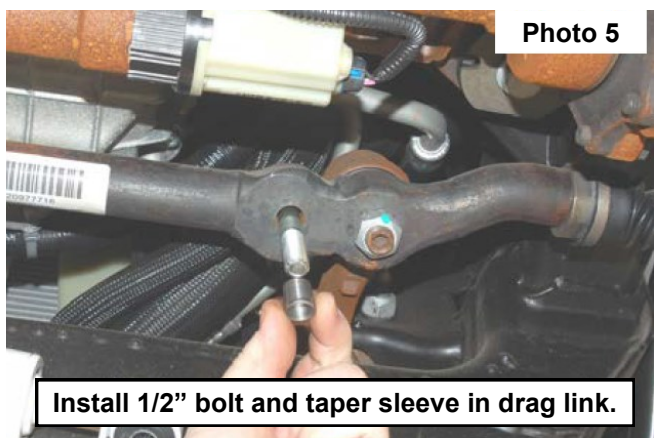
1. Place wheels in straight forward position.
2. Install the supplied crush sleeves in each end of the stabilizer. Sleeve from 87311BAG goes into the cylinder end of the stabilizer. **See Photo 1.**
3. Install the stabilizer bracket to the crossmember with the supplied 12mm x 120mm bolt, flat washers, 3.8" sleeve, and nut using an 18mm socket/wrench. Install the 3.8" sleeve into the frame. **See Photo 2. Don't fully tighten at this point.**



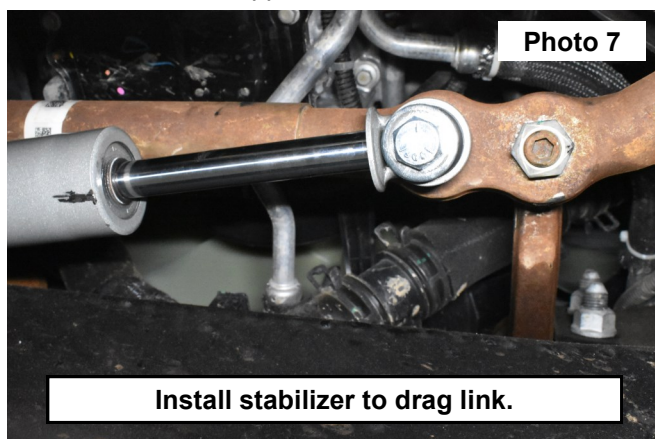
4. Remove the nut from the 18mm bolt from the crossmember using a 27mm socket/wrench and install two 18mm flat washers. Slide the stabilizer bracket over the 18mm bolt and reinstall the nut. **See Photo 3.**
Now tighten the 12mm bolt on the stabilizer bracket.
5. Install the stabilizer (cylinder end of shock) to the bracket with the supplied 12mm x 65mm bolt and flange locknut using two 18mm wrenches. **See Photo 4.**



6. Install the supplied 1/2" x 3 1/2" bolt in from the top and install the supplied taper sleeve into hole in drag link. **See Photo 5.**
7. Install the two supplied thick washers on the bolt and install the stabilizer. **See Photo 6.**



8. Secure with the supplied 1/2" washer, lock washer and the nut using a 19mm wrench. **See Photo 7.**



9. Turn wheels fully to the right and left, making sure that no interference occurs and that wheel stops are contacted.

By purchasing any item sold by Rough Country, LLC, the buyer expressly warrants that he/she is in compliance with all applicable, State, and Local laws and regulations regarding the purchase, ownership, and use of the item. It shall be the buyers responsibility to comply with all Federal, State and Local laws governing the sales of any items listed, illustrated or sold. The buyer expressly agrees to indemnify and hold harmless Rough Country, LLC for all claims resulting directly or indirectly from the purchase, ownership, or use of the items.

