

Powered Wiper - Lightweight Composite Clad Frame Windshield

Thank you for choosing Rough Country for all your vehicle needs.

Please read instructions before beginning installation. Check the kit hardware against the kit contents shown below. Be sure you have all needed parts and know where they go.

If question exist, please call us @1-800-222-7023. We will be happy to answer any questions concerning this product.

Check all fasteners for proper torque. Check to ensure for adequate clearance between all components.

Periodically check all hardware for tightness.

TOOLS NEEDED:

- Drill Motor
- 1/4" Drill Bit
- 3/8" Drill Bit
- 4mm Allen Wrench
- 10mm Socket
- Phillips Screwdriver
- 3/4" Wrench



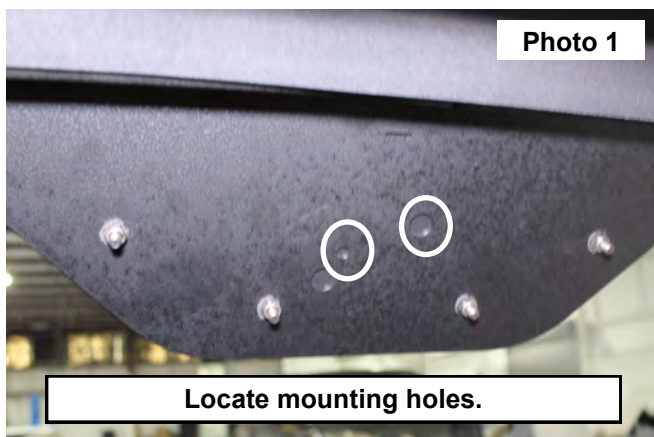
Torque Specs:

Size	Grade 5	Grade 8	Size	Class 8.8	Class 10.9
5/16"	15 ft/lbs	20ft/lbs	6MM	5ft/lbs	9ft/lbs
3/8"	30 ft/lbs	35ft/lbs	8MM	18ft/lbs	23ft/lbs
7/16"	45 ft/lbs	60ft/lbs	10MM	32ft/lbs	45ft/lbs
1/2"	65 ft/lbs	90ft/lbs	12MM	55ft/lbs	75ft/lbs
9/16"	95 ft/lbs	130ft/lbs	14MM	85ft/lbs	120ft/lbs
5/8"	135ft/lbs	175ft/lbs	16MM	130ft/lbs	165ft/lbs
3/4"	185ft/lbs	280ft/lbs	18MM	170ft/lbs	240ft/lbs

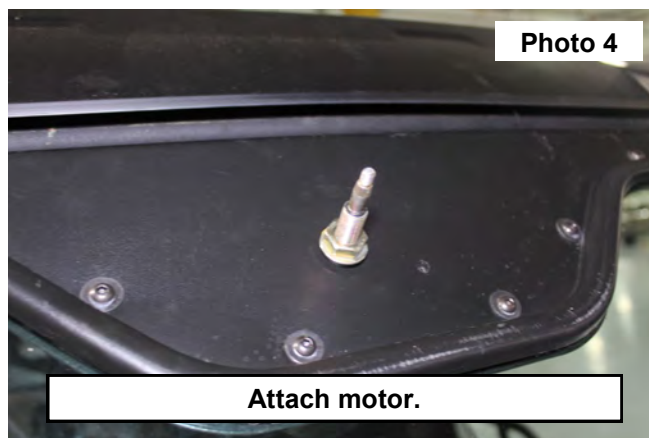
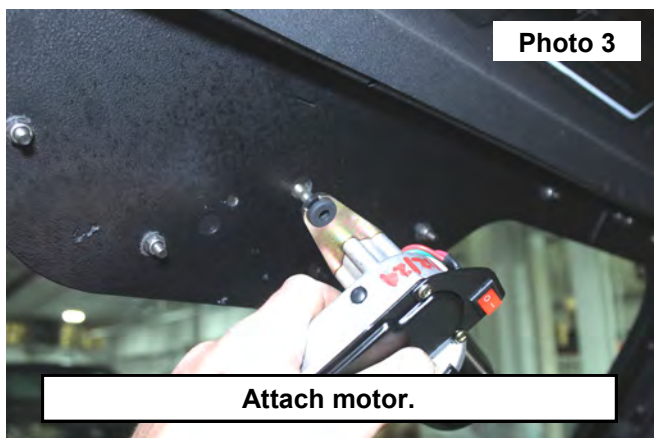


INSTALLATION INSTRUCTIONS

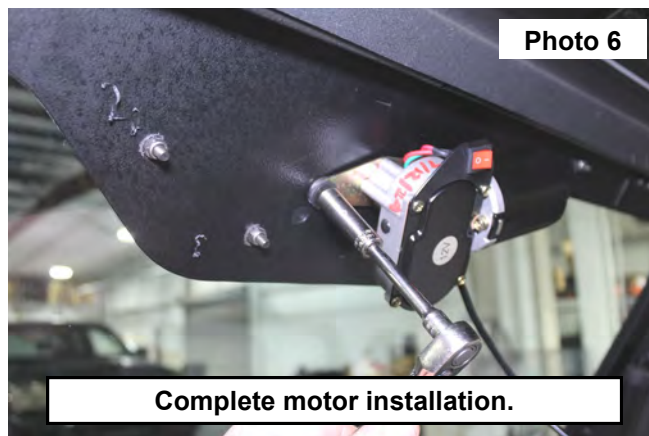
1. Locate the pre-drilled holes in the metal skin of the windshield. **See Photo 1.**
2. Use a 1/4" and 3/8" drill to drill holes in the windshield. **See Photo 2.**



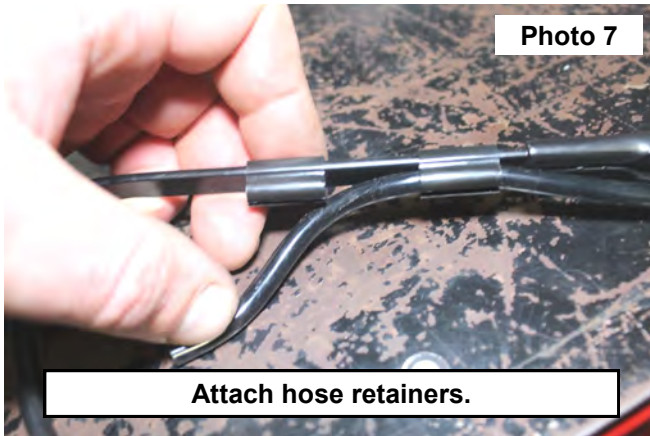
3. Secure the motor to the metal skin using the supplied wiper arm hardware. Tighten with a 3/4" wrench. **NOTE:** Be sure the rubber grommet is correctly installed on both sides of the windshield before installing the supplied washer and nut. **See Photo 3 and Photo 4.**



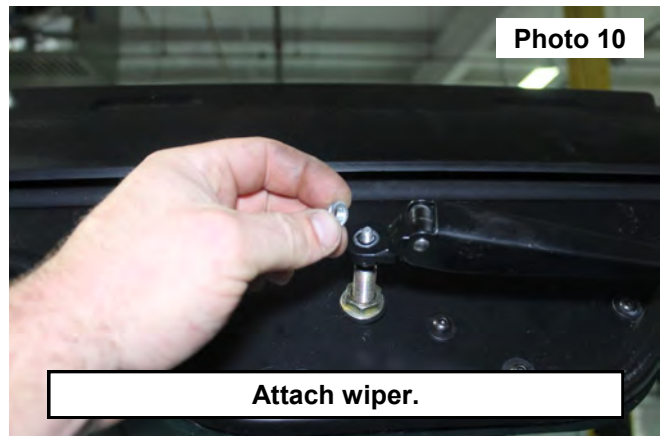
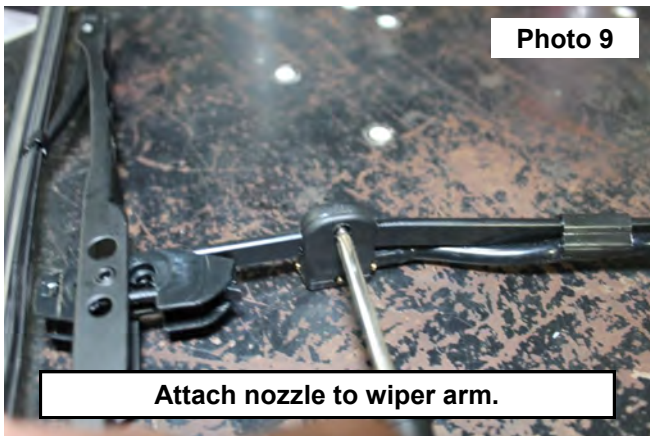
4. Install the supplied 6mm button head bolt, 6mm washer, and 6mm nut in the previously drilled smaller hole. Tighten with a 10mm socket. **See Photo 5 and Photo 6.**



5. Feed the supplied washer hose down the included wiper arm. Attach the two hose retainers to the arm. **See Photo 7.**
6. Attach the supplied washer nozzle to the end of the hose. **See Photo 8.**



7. Use a Phillips screwdriver to secure the nozzle to the wiper arm. **See Photo 9.**
8. Attach the supplied dust cover over the exposed threads. Next, place the assembled wiper arm onto the motor stud and secure it with the supplied 6mm flange nut. Tighten with a 10mm socket. **See Photo 10.**



9. Place washer fluid tank in desired location. Route the washer hose to the fluid tank.
10. Wire the motor to preference.

POST INSTALLATION INSTRUCTIONS

1. Check all fasteners for proper torque. Check to ensure for adequate clearance between all rotating, mobile, fixed, and heated members. Verify clearance between exhaust and brake lines, fuel lines, fuel tank, floorboards, and wiring harness.
2. Perform steering sweep to ensure front brake hoses have adequate slack and do not contact any rotating, mobile, or heated members. Inspect rear brake hoses at full extension for adequate slack. Failure to perform hose check/replacement may result in component failure.
3. All kit components must be retightened at 500 miles and then every 300 miles after installation. Periodically check all hardware for tightness.

By purchasing any item sold by Rough Country, LLC, the buyer expressly warrants that he/she is in compliance with all applicable, State, and Local laws and regulations regarding the purchase, ownership, and use of the item. It shall be the buyers responsibility to comply with all Federal, State and Local laws governing the sales of any items listed, illustrated or sold. The buyer expressly agrees to indemnify and hold harmless Rough Country, LLC for all claims resulting directly or indirectly from the purchase, ownership, or use of the items.

