

UNIVERSAL RECEIVER WINCH MOUNT

Thank you for choosing Rough Country for all your vehicle needs.

Please read instructions before beginning installation. Check the kit hardware against the kit contents shown below. Be sure you have all needed parts and know where they go.

If question exist, please call us @1-800-222-7023. We will be happy to answer any questions concerning this product.

Check all fasteners for proper torque. Check to ensure for adequate clearance between all components.

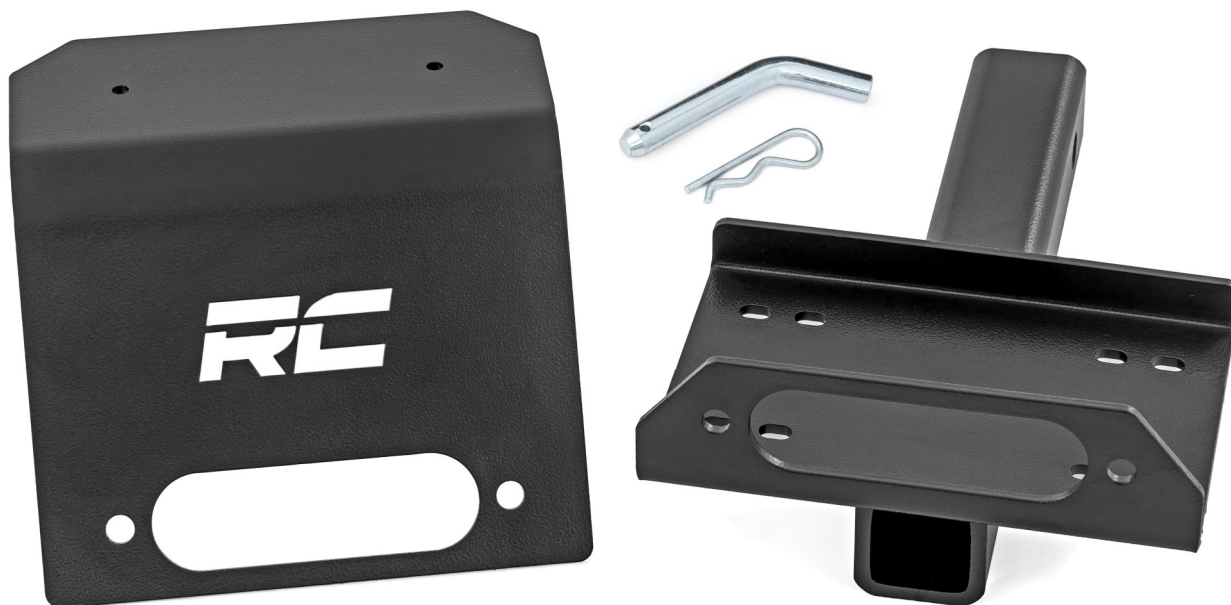
Periodically check all hardware for tightness.

KIT CONTENTS:

Receiver Winch Mount Tray

Receiver Winch Mount Tray - Fairlead Plate

▲ NOTICE Mounting hardware for the winch and fairlead will be included with the winch. **SOLD SEPARATELY**



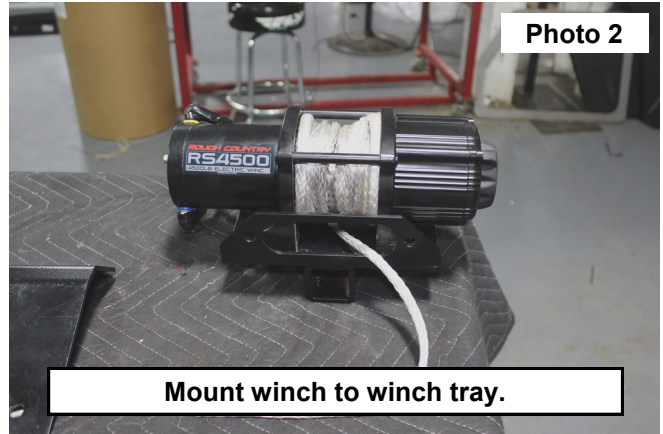
Torque Specs:

Size	Grade 5	Grade 8	Size	Class 8.8	Class 10.9
5/16"	15 ft/lbs	20ft/lbs	6MM	5ft/lbs	9ft/lbs
3/8"	30 ft/lbs	35ft/lbs	8MM	18ft/lbs	23ft/lbs
7/16"	45 ft/lbs	60ft/lbs	10MM	32ft/lbs	45ft/lbs
1/2"	65 ft/lbs	90ft/lbs	12MM	55ft/lbs	75ft/lbs
9/16"	95 ft/lbs	130ft/lbs	14MM	85ft/lbs	120ft/lbs
5/8"	135ft/lbs	175ft/lbs	16MM	130ft/lbs	165ft/lbs
3/4"	185ft/lbs	280ft/lbs	18MM	170ft/lbs	240ft/lbs

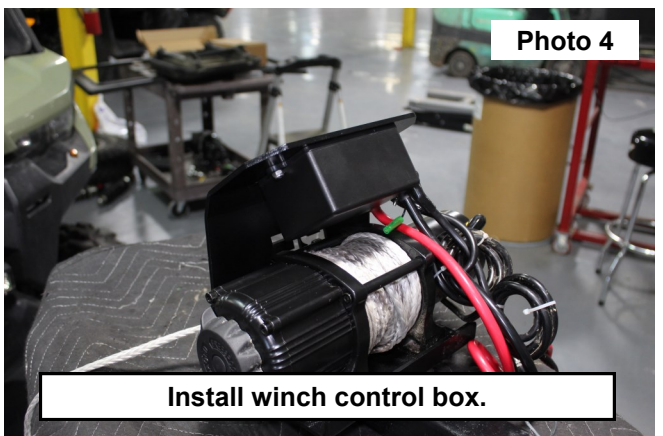
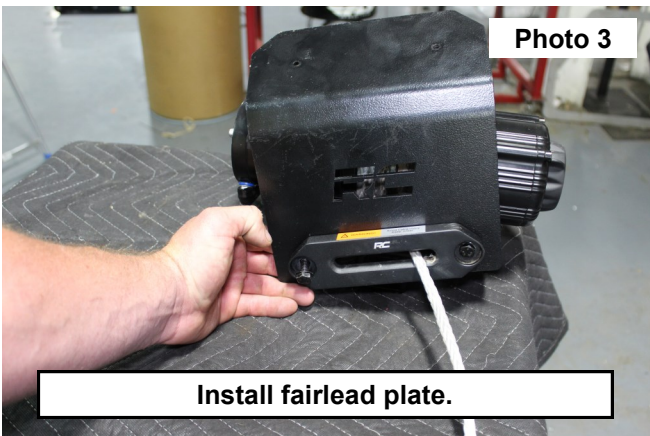


INSTALLATION INSTRUCTONS

1. Feed the working end of the winch through the slot of the winch mount tray and fairlead plate. **See Photo 1.**
2. Mount the winch to the winch tray using the hardware supplied with the winch. **Sold Separately. See Photo 2.**



3. Feed the winch cable through the fairlead supplied with the winch. Attach the fairlead to the fairlead plate and winch tray using the hardware supplied with the winch. **See Photo 3.**
4. Install the winch control box to the fairlead plate using the hardware supplied with the winch. **See Photo 4.**
5. Attach the assembled mount to vehicle.



By purchasing any item sold by Rough Country, LLC, the buyer expressly warrants that he/she is in compliance with all applicable, State, and Local laws and regulations regarding the purchase, ownership, and use of the item. It shall be the buyers responsibility to comply with all Federal, State and Local laws governing the sales of any items listed, illustrated or sold. The buyer expressly agrees to indemnify and hold harmless Rough Country, LLC for all claims resulting directly or indirectly from the purchase, ownership, or use of the items.

