

ROUGH COUNTRY

SUSPENSION SYSTEMS®

F-C11511A



WARNING: This product contains a chemical known to the State of California to cause Cancer and Reproductive Harm. For more information, go to www.P65Warnings.ca.gov.

2015-2022 CHEVY COLORADO 2WD/4WD 5 FT BED TRADITIONAL STYLE FLARES

PRIOR TO INSTALLATION

- A) Install the flares according to these written instructions with the hardware provided. **WARNING:** Failure to install according to these instructions will invalidate the warranty. This includes, but is not limited to, using alternative installation methods, hardware, or materials. **DO NOT USE:** Loctite, Superglue, or similar products on the hardware or the flares. *Install flares on cleaned vehicle surfaces.*
- B) **Fit:** Verify the fit of the flares to vehicle prior to installation (some filing, sanding, or cutting may be necessary to ensure proper fit).
- C) **Painting:** (Optional) if paint is desired it must be done prior to installing flares on vehicle. Clean outer surface with a good grade degreaser. **DO NOT USE LACQUER THINNER OR ENAMEL REDUCER AS A DEGREASER.** Wipe outer surface thoroughly with a tack rag prior to paint. Application of plastic adhesion promoter for ABS plastic as per your paint system manufacturer's recommendations is required. Paint flares using a high-quality enamel, or polyurethane automotive paint. If painting edge trim (not recommended), use a flex additive.
- D) **Performance:** Using larger tires may increase the area required to turn the vehicle. Some tire/rim combinations may require lowering bump stops and or installing steering stops to prevent tire from contacting flare.
- E) **Exhaust System:** Modifications may be necessary to maintain a minimum 4" clearance between flares and exhaust pipes. (Exhaust gases should not vent directly onto flares)
- F) **Metal Protection:** All exposed fasteners and bare metal should be treated with rust resistant paint **BEFORE** installing flares. Spray inner fender wells with undercoating **AFTER** flare attachments have been completed.
- G) **Decals:** Flares may interfere with existing decals on vehicle. If you wish, remove decals prior to installation of flares.
- H) **Care & Cleaning:** Fender flares are built to last; any detergent you use to wash your vehicle is sufficient to clean the flare. Do not use any harsh abrasive detergents.

TOOLS FOR EASY INSTALLATION:

- Soft Cloth or Alcohol Wipe
- Socket Wrench
- T-15 Torx Bit
- #2 Philips Screwdriver
- Grease Pencil
- Awl
- Pliers
- Utility Knife

PLEASE READ: Dirt and debris can become lodged between the fender flares and the vehicle's fenders, causing scratching and paint wear from vibration. Manufacturer is not responsible for any damage, and the installation of our fender flares is done with the buyer's understanding that this scratching and paint wear may occur.

LIMITED LIFETIME WARRANTY AGAINST ANY MANUFACTURING DEFECTS: To claim warranty you must provide Proof of Purchase.



INCLUDED IN HARDWARE KIT:

1.



Push-In Pocket Hardware, Brushed Metal
44 pcs

2.



Push-In Pocket Hardware, Black
44 pcs

3.



Small "U" Clip
10 pcs

4.



Large "U" Clip Screw
12 pcs

5.



Mounting Tab
12 pcs

6.



#10 Truss Head Screw
22 pcs

7.



Wiper Style Edge Trim
346 inches



IF YOU PURCHASED GLOSSY BLACK FLARES (CODE "RCGB"):



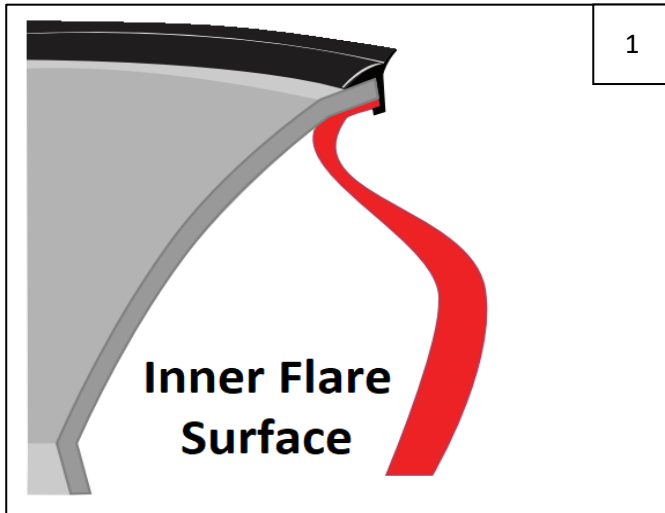
Prior to beginning installation process, peel the protective liner from each plastic piece included in the flare kit – all flares and inner pieces.

NOTE: It will be difficult to remove liner once edge trim and hardware are installed.

Once liner is removed, take care not to scratch flare surfaces. If flare needs to be cleaned, wipe gently with a clean soft cloth.



SECTION 1: EDGE TRIM INSTALLATION



Peel 2-3 inches of red vinyl backing away from supplied edge trim tape. Applying the adhesive side of the edge trim to the inner side of the flare, affix the edge trim to the top edge of the flare (the portion that comes in contact with the side of the vehicle).

Press edge trim into place along the top edge of the flare in one-foot increments, pulling red vinyl backing free as you continue to work your way around the top edge of the flare. Trim edge trim flush with ends of flare.



At each corner of the gas door cutout feature, carefully cut a small notch in the back of the edge trim with a utility knife, to prevent the edge trim from slipping off the edge.

SECTION 2: PUSH-IN POCKET HARDWARE INSTALLATION



Peel liner from tape on Push-In Pocket Hardware (brushed metal or black as preferred). NOTE: There will be extra Push-In Pocket Hardware.



Insert Push-In Pocket Hardware into each flare pocket hole (on outer flare surface, 8 places each front flare, 9 places each rear). Push in to engage clip and tape adhesion.

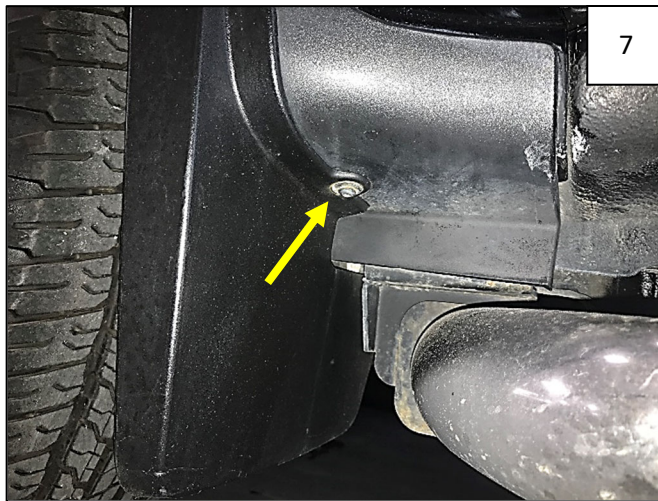
SECTION 3: FRONT FLARE INSTALLATION



Using a T-15 Torx bit, remove 6 factory fasteners indicated in next step. Retain all fasteners for reinstallation.



If your vehicle has factory mud flaps, remove 3 fasteners from inside of wheel well as shown.



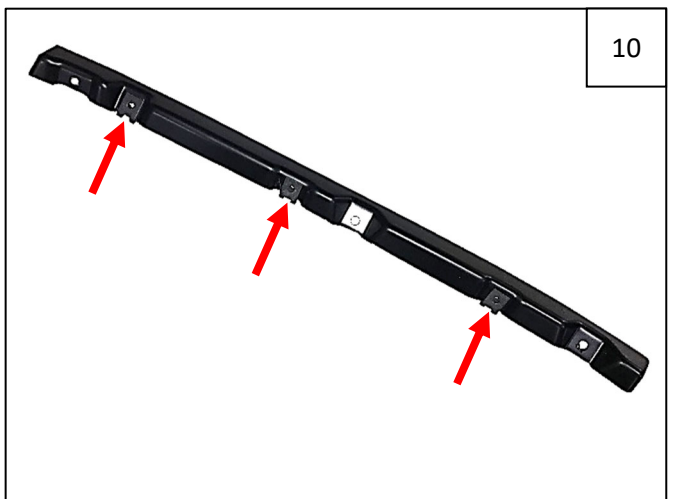
Remove 1 fastener from rear underside of mud flap. Discard mud flap.



If your vehicle does NOT have factory mud flaps, remove 2 fasteners from mud guard as shown.



Install 3 supplied Short "U" Clips over holes in Long Inner Piece.



Long Inner Piece hole locations (driver side shown).



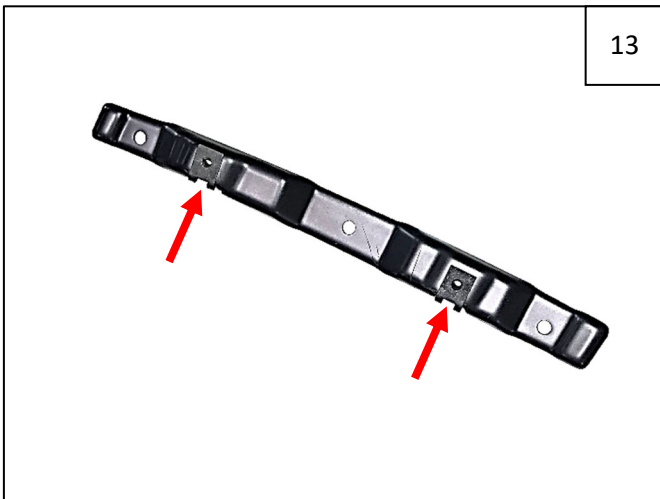
11

Install Long Inner Piece onto top underside lip of fender using 3 factory screws.



12

Install 2 supplied Short "U" Clips over holes in Short Inner Piece.



13

Short Inner Piece hole locations (driver side shown).



14

Install Short Inner Piece onto front lip of fender using 3 factory screws.



15

Hold flare firmly on fender. Using a grease pencil, mark 1 hole location in area shown in Step 16.



16

Hole location.





17 Peel PSA liner from supplied Mounting Tab. Center Mounting Tab on fender over mark made in Steps 15-16, folding over fender lip.



18 Slide a supplied Long "U" Clip over Mounting Tab.



19 Hold flare on fender and start a supplied #10 Truss Head Screw through hole and into clip installed in Step 18. NOTE: Use an awl to locate and center hole in clip if needed.



20 Install a factory screw through lowermost rear hole in flare and into factory hole in fender.



21 Install 5 supplied #10 Truss Head Screws through forwardmost holes in flare and into clips installed in the Long and Short Inner Pieces. NOTE: Use an awl to locate and center holes in clips if needed.



22 Apply pressure to outward face of the flare towards the center of the vehicle and tighten all screws.



SECTION 4: REAR FLARE INSTALLATION



Using a T-15 Torx Bit, Remove 2 factory fasteners from front mud guard. Retain all fasteners for reinstallation.



Remove 1 factory fastener from underside of front mud guard.



Using pliers, disengage white clip at underside of front mud guard. Remove front mud guard.



If your vehicle has factory mud flaps, remove 4 fasteners from inside of wheel well as shown.



Remove 1 fastener from rear underside of mud flap. Discard mud flap.



If your vehicle does NOT have factory mud flaps, remove 2 fasteners from rear mud guard as shown.



Hold flare firmly on fender. Using a grease pencil, mark 5 hole locations in area shown in Step 30.



Hole locations.



Center a supplied Mounting Tab over each mark made in Steps 29-30.



Slide a supplied Long "U" Clip over each Mounting Tab installed in Step 31.



Hold flare firmly on fender. Start 3 factory screws in holes indicated by arrows.



Start 5 supplied #10 Truss Head Screws through holes in flare and into clips installed in Step 32. NOTE: Use an awl to locate and center holes in clips if needed.



Apply pressure to outward face of the flare towards the center of the vehicle and tighten all screws.