

ROUGH COUNTRY

SUSPENSION SYSTEMS®



WARNING: This product contains a chemical known to the State of California to cause Cancer and Reproductive Harm. For more information, go to www.P65Warnings.ca.gov.

2019-2022 FORD RANGER 2WD/4WD LONG BED TRADITIONAL STYLE FLARES

PRIOR TO INSTALLATION

- A) Install the flares according to these written instructions with the hardware provided. **WARNING:** Failure to install according to these instructions will invalidate the warranty. This includes, but is not limited to, using alternative installation methods, hardware, or materials. **DO NOT USE:** Loctite, Superglue, or similar products on the hardware or the flares. *Install flares on cleaned vehicle surfaces.*
- B) **Fit:** Verify the fit of the flares to vehicle prior to installation (some filing, sanding, or cutting may be necessary to ensure proper fit).
- C) **Painting:** (Optional) if paint is desired it must be done prior to installing flares on vehicle. Clean outer surface with a good grade degreaser. **DO NOT USE LACQUER THINNER OR ENAMEL REDUCER AS A DEGREASER.** Wipe outer surface thoroughly with a tack rag prior to paint. Application of plastic adhesion promoter for ABS plastic as per your paint system manufacturer's recommendations is required. Paint flares using a high-quality enamel, or polyurethane automotive paint. If painting edge trim (not recommended), use a flex additive.
- D) **Performance:** Using larger tires may increase the area required to turn the vehicle. Some tire/rim combinations may require lowering bump stops and or installing steering stops to prevent tire from contacting flare.
- E) **Exhaust System:** Modifications may be necessary to maintain a minimum 4" clearance between flares and exhaust pipes. (Exhaust gases should not vent directly onto flares)
- F) **Metal Protection:** All exposed fasteners and bare metal should be treated with rust resistant paint **BEFORE** installing flares. Spray inner fender wells with undercoating **AFTER** flare attachments have been completed.
- G) **Decals:** Flares may interfere with existing decals on vehicle. If you wish, remove decals prior to installation of flares.
- H) **Care & Cleaning:** Fender flares are built to last; any detergent you use to wash your vehicle is sufficient to clean the flare. Do not use any harsh abrasive detergents.

TOOLS FOR EASY INSTALLATION:

- Soft Cloth or Alcohol Wipe
- Socket Wrench
- T-25 Torx Bit
- #2 Philips Screwdriver
- Pry Tool
- Grease Pencil
- Awl
- Utility Knife

PLEASE READ: Dirt and debris can become lodged between the fender flares and the vehicle's fenders, causing scratching and paint wear from vibration. Manufacturer is not responsible for any damage, and the installation of our fender flares is done with the buyer's understanding that this scratching and paint wear may occur.

LIMITED LIFETIME WARRANTY AGAINST ANY MANUFACTURING DEFECTS: To claim warranty you must provide Proof of Purchase.

INCLUDED IN HARDWARE KIT:

1.



Push-In Pocket Hardware, Brushed Metal
44 pcs

2.



Push-In Pocket Hardware, Black
44 pcs

3.



Mylar Tab
2 pcs

4.



"S" Clip
2 pcs

5.



Short Screw
2 pcs

6.



Foam Tab
4 pcs

7.



"U" Clip
4 pcs

8.



Long Screw
4 pcs

9.



Plastic Push-In Retainer
12 pcs

10.



Wiper Style Edge Trim
312 inches



IF YOU PURCHASED GLOSSY BLACK FLARES (CODE "RCGB"):



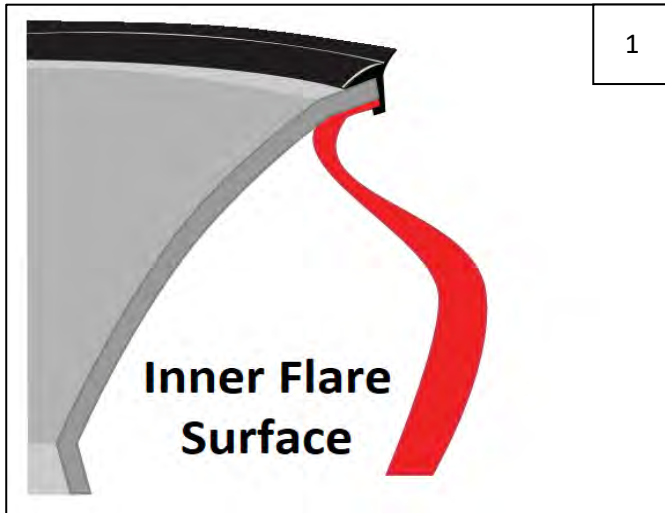
Prior to beginning installation process, peel the protective liner from each plastic piece included in the flare kit – all flares and inner pieces.

NOTE: It will be difficult to remove liner once edge trim and hardware are installed.

Once liner is removed, take care not to scratch flare surfaces. If flare needs to be cleaned, wipe gently with a clean soft cloth.



SECTION 1: EDGE TRIM INSTALLATION



1

Peel 2-3 inches of red vinyl backing away from supplied edge trim tape. Applying the adhesive side of the edge trim to the inner side of the flare, affix the edge trim to the top edge of the flare (the portion that comes in contact with the side of the vehicle).

Press edge trim into place along the top edge of the flare in one-foot increments, pulling red vinyl backing free as you continue to work your way around the top edge of the flare. Trim edge trim flush with ends of flare.



2

At each corner of the gas door cutout feature, carefully cut a small notch in the back of the edge trim with a utility knife, to prevent the edge trim from slipping off the edge.

SECTION 2: PUSH-IN POCKET HARDWARE INSTALLATION



3

Peel liner from tape on Push-In Pocket Hardware (brushed metal or black as preferred). NOTE: There will be extra Push-In Pocket Hardware.



4

Insert Push-In Pocket Hardware into each flare pocket hole (on outer flare surface, 8 places each front flare, 8 places driver rear, 9 places passenger rear). Push in to engage clip and tape adhesion.

SECTION 3: FRONT FLARE INSTALLATION



Using a #2 Phillips screwdriver, loosen 3 factory fasteners. Use a pry tool to remove fasteners fully.



Pull wheel well liner back near front of flare to expose marker light wiring.



Disconnect the bulb/wire harness from the marker light. Remove the marker light from the fender by disengaging clip.



Reinstall marker light in flare at an angle, engaging clip.



Hold flare firmly on fender. Using a grease pencil, mark 1 rear hole location in area shown in Step 10.



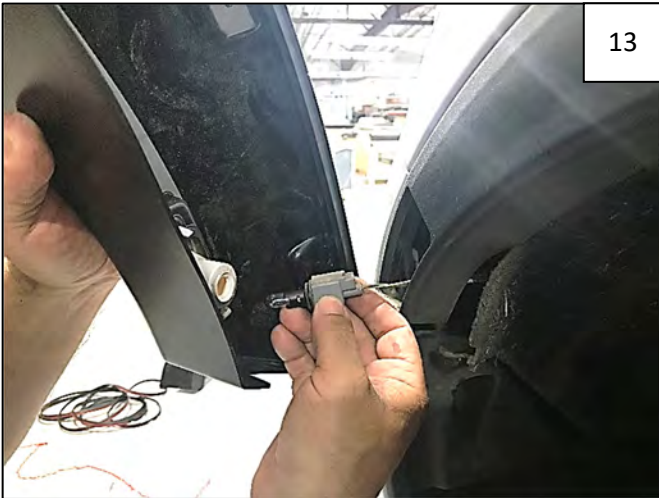
Hole location.



Peel PSA liner from supplied Mylar Tab. Center Mounting Tab on fender over mark made in Steps 9-10, folding over fender lip.



Slide a supplied "S" Clip over Mylar Tab and fender lip.



Reconnect the bulb/wire harness to the marker light. Tuck wheel well liner back into fender lip.



Hold flare firmly on fender, and install 3 supplied Plastic Push-In Retainers through holes in flare and into fender where indicated.



Install 1 supplied Short Screw through the rearmost hole in flare and into clip installed in Step 12.



Apply pressure to outward face of the flare towards the center of the vehicle and tighten all screws.

SECTION 4: REAR FLARE INSTALLATION



If mudflap is present, remove prior to installing flare. Using a #2 Phillips screwdriver, loosen 3 factory fasteners. Use a pry tool to remove fasteners fully.



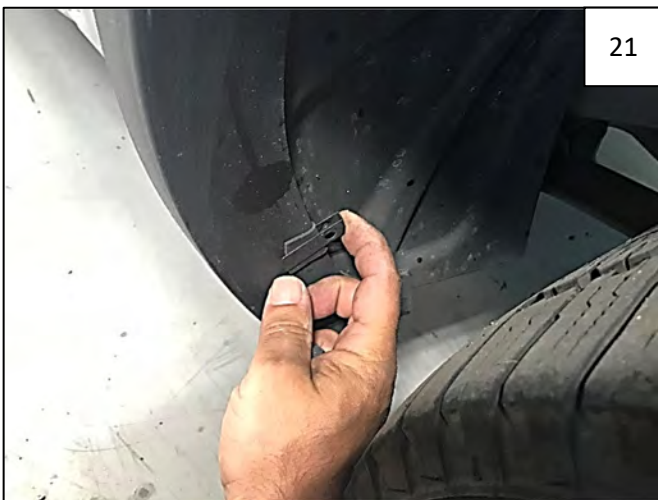
Hold flare firmly on fender. Using a grease pencil, mark 2 hole locations indicated by arrows in next step.



Hole locations.



Peel PSA liner from supplied Foam Tab. Center FoamTab on fender over marks made in Steps 18-19, folding over fender lip.



Slide a supplied "U" Clip over Foam Tabs installed in Step 20.



Hold flare firmly on fender, and install 3 supplied Plastic Push-In Retainers through holes in flare and into fender where indicated.



Install a supplied Long Screw through flare and into each clip installed in Step 21.



Apply pressure to outward face of the flare towards the center of the vehicle and tighten all screws.