

ROUGH COUNTRY

SUSPENSION SYSTEMS®



WARNING: This product contains a chemical known to the State of California to cause Cancer and Reproductive Harm. For more information, go to www.P65Warnings.ca.gov.

2015-2020 FORD F150 TRADITIONAL STYLE FLARES

PRIOR TO INSTALLATION

- A) Install the flares according to these written instructions with the hardware provided. **WARNING:** Failure to install according to these instructions will invalidate the warranty. This includes, but is not limited to, using alternative installation methods, hardware, or materials. **DO NOT USE:** Loctite, Superglue, or similar products on the hardware or the flares. Install flares on cleaned vehicle surfaces.
- B) **Fit:** Verify the fit of the flares to vehicle prior to installation (some filing, sanding, or cutting may be necessary to ensure proper fit).
- C) **Painting:** (Optional) if paint is desired it must be done prior to installing flares on vehicle. Clean outer surface with a good grade degreaser. **DO NOT USE LACQUER THINNER OR ENAMEL REDUCER AS A DEGREASER.** Wipe outer surface thoroughly with a tack rag prior to paint. Application of plastic adhesion promoter for ABS plastic as per your paint system manufacturer's recommendations is required. Paint flares using a high-quality enamel, or polyurethane automotive paint. If painting edge trim (not recommended), use a flex additive.
- D) **Performance:** Using larger tires may increase the area required to turn the vehicle. Some tire/rim combinations may require lowering bump stops and or installing steering stops to prevent tire from contacting flare.
- E) **Exhaust System:** Modifications may be necessary to maintain a minimum 4" clearance between flares and exhaust pipes. (Exhaust gases should not vent directly onto flares)
- F) **Metal Protection:** All exposed fasteners and bare metal should be treated with rust resistant paint **BEFORE** installing flares. Spray inner fender wells with undercoating **AFTER** flare attachments have been completed.
- G) **Decals:** Flares may interfere with existing decals on vehicle. If you wish, remove decals prior to installation of flares.
- H) **Care & Cleaning:** Fender flares are built to last; any detergent you use to wash your vehicle is sufficient to clean the flare. Do not use any harsh abrasive detergents.

TOOLS FOR EASY INSTALLATION:

- Soft Cloth or Alcohol Wipe
- Utility Knife
- #2 Phillips Driver
- Socket Wrench
- 7/32" Socket
- 9/32" Socket
- 10mm Socket
- Grease Pencil
- Pry Tool

PLEASE READ: Dirt and debris can become lodged between the fender flares and the vehicle's fenders, causing scratching and paint wear from vibration. Manufacturer is not responsible for any damage, and the installation of our fender flares is done with the buyer's understanding that this scratching and paint wear may occur.

LIMITED LIFETIME WARRANTY AGAINST ANY MANUFACTURING DEFECTS: To claim warranty you must provide Proof of Purchase.

INCLUDED IN HARDWARE KIT:

1.



Push-In Pocket
Hardware, Brushed
Metal
44 pcs

2.



Push-In Pocket
Hardware, Black
44 pcs

3.



#8 Speed Clip
4 pcs

4.



#8 Screw
4 pcs

5.



#10 "U" Clip
6 pcs

6.



Long "U" Clip
10 pcs

7.



Foam Tab
10 pcs

8.



#10 Truss Screw
16 pcs

9.



Nylon Retainer
2 pcs

10.



Med. Wiper Style
Edge Trim
330 inches



IF YOU PURCHASED GLOSSY BLACK FLARES (CODE "RCGB"):



Prior to beginning installation process, peel the protective liner from each plastic piece included in the flare kit – all flares and inner pieces.

NOTE: It will be difficult to remove liner once edge trim and hardware are installed.

Once liner is removed, take care not to scratch flare surfaces. If flare needs to be cleaned, wipe gently with a clean soft cloth.



SECTION 1: FRONT FLARE EXTENSION PIECE INSTALLATION

Prior to installation determine which front fender extension piece your vehicle requires:

- Long extension pieces are for 2015-2017 Ford F150
- Short extension pieces are for 2018 -2020 Ford F-150

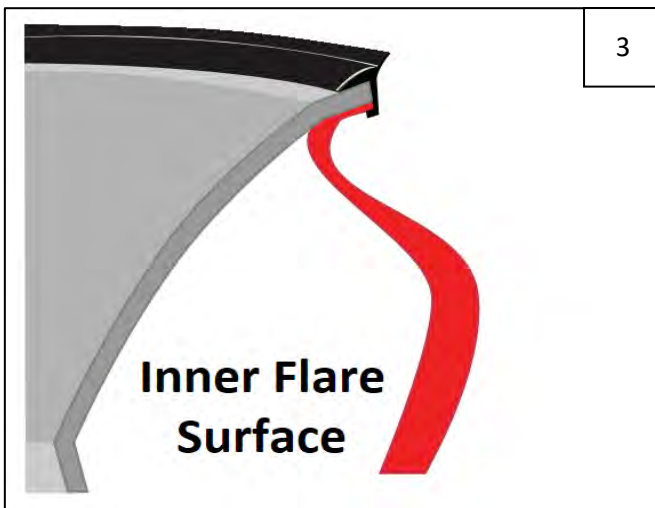


Install Extension Pieces to main front flares using 2 supplied #8 Speed Clips and #8 Screws per side.



Before tightening, make sure that molded flare features are aligned. Tighten screws using #2 Phillips driver.

SECTION 2: EDGE TRIM INSTALLATION



Peel 2-3 inches of red vinyl backing away from supplied edge trim tape. Applying the adhesive side of the edge trim to the inner side of the flare, affix the edge trim to the top edge of the flare (the portion that comes in contact with the side of the vehicle).

Press edge trim into place along the top edge of the flare in one-foot increments, pulling red vinyl backing free as you continue to work your way around the top edge of the flare. Trim edge trim flush with ends of flare.



When you come to the jointure of the flare and extension piece, cut a notch in the back of the edge trim.

SECTION 3: PUSH-IN POCKET HARDWARE INSTALLATION

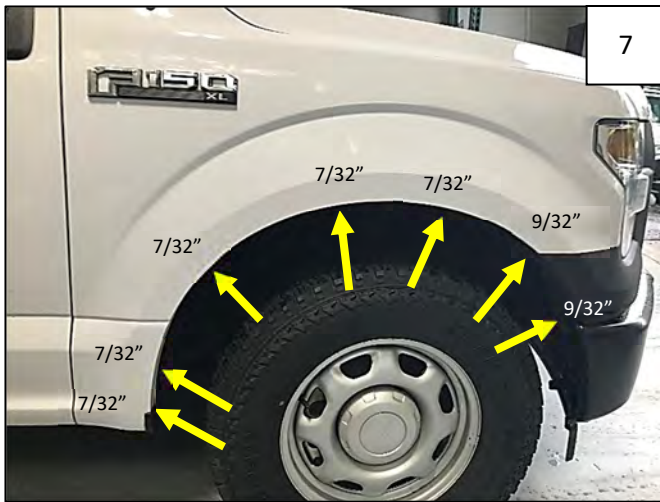


Peel liner from tape on Push-In Pocket Hardware (brushed metal or black as preferred). NOTE: There will be extra Push-In Pocket Hardware.



Insert Push-In Pocket Hardware into each flare pocket hole (on outer flare surface, 8 places each front flare, 9 places each rear). Push in to engage clip and tape adhesion.

SECTION 4: FRONT FLARE INSTALLATION



Remove 5 factory screws with a 7/32" Socket. Remove 2 front-most factory screws with 9/32" Socket. Retain Screws for reinstallation. **NOTE:** For Platinum Edition, additional screws will need to be removed and saved for reinstallation.



Attach 3 #10 "U" Clips to each Inner Bracket over pre-drilled holes as shown. **NOTE:** Driver Side Inner Bracket is marked with an "LF" and Passenger Side Inner Bracket is marked with an "RR."



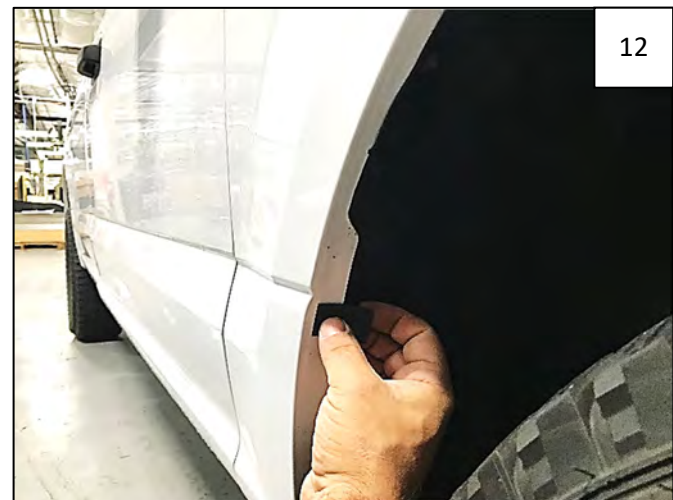
Line up the holes in the Inner Bracket with the 3 uppermost factory holes, installing correct Inner Bracket for each side.



Using a 7/32" Socket, reinstall 3 top factory screws through the holes in the Inner Bracket. Tighten screws.



Hold flare to vehicle and mark 1 flare hole location with grease pencil.



Peel liner from a supplied Foam Tab and wrap around the wheel well sheet metal, centered over the mark made in Step 11.



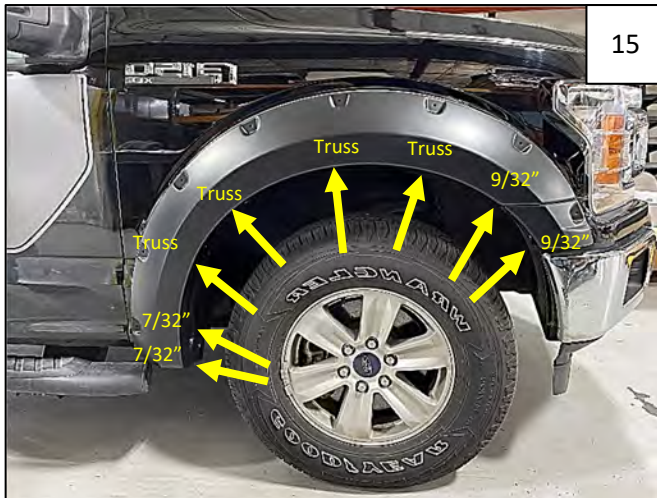
13

Install a Long "U" Clip over the Foam Tab placed in Step 12.



14

Position flare on fender, applying pressure on flare toward vehicle surface. Line up the flare mounting holes with the mounting clips on the Inner Bracket. Using a Phillips Screwdriver, install 3 supplied #10 Truss Screws through the flare and into clips. Do not tighten.



15

Still holding flare to fender, re-install remaining factory screws removed in Step 7 using 7/32" and 9/32" sockets. Using Phillips Screwdriver, install 1 #10 Truss Screw into Long "U" clip installed in Step 13.



16

Apply pressure to flare towards vehicle body at each fastening point and tighten all fasteners.

SECTION 5: REAR FLARE INSTALLATION



Using a pry tool, remove plastic factory fastener from rear of wheel well.



Hold flare to vehicle and mark 4 flare hole locations with a grease pencil.



Hole locations.



Peel liner from a supplied Foam Tab and wrap around wheel well sheet metal, centering over each mark made in Step 18 (4 places).



Install a supplied Long "U" Clip over each Foam Tab.



While holding flare to vehicle, start supplied #10 Truss Screws through the 4 topmost mounting holes in flare and into clips installed in Step 21.



Apply pressure to flare towards vehicle body at each fastening point and tighten all fasteners.



Install supplied Nylon Retainer through flare and into factory hole at rear of wheel well.



Completed rear flare installation.