

ROUGH COUNTRY

SUSPENSION SYSTEMS®



WARNING: This product contains a chemical known to the State of California to cause Cancer and Reproductive Harm. For more information, go to www.P65Warnings.ca.gov.

2021-2024 FORD F-150 HOOD SCOOP

PRIOR TO INSTALLATION

- A) Install the parts according to these written instructions with the hardware provided. **WARNING:** Failure to install according to these instructions will invalidate the warranty. This includes, but is not limited to, using alternative installation methods, hardware, or materials. **DO NOT USE:** Loctite, Superglue, or similar products on the hardware or the flares. *Install parts on cleaned vehicle surfaces.*
- B) **Fit:** Verify the fit of the parts to vehicle prior to installation (some filing, sanding, or cutting may be necessary to ensure proper fit).
- C) **Painting:** (Optional) if paint is desired it must be done prior to installing parts on vehicle. Clean outer surface with a good grade degreaser. **DO NOT USE LACQUER THINNER OR ENAMEL REDUCER AS A DEGREASER.** Wipe outer surface thoroughly with a tack rag prior to paint. Application of plastic adhesion promoter for TPO plastic as per your paint system manufacturer's recommendations is required. Paint parts using a high-quality enamel, or polyurethane automotive paint.
- D) **Metal Protection:** All exposed fasteners and bare metal should be treated with rust resistant paint **BEFORE** installing parts
- E) **Decals:** Parts may interfere with existing decals on vehicle. If you wish, remove decals prior to installation of parts.
- F) **Care & Cleaning:** Parts are built to last; any detergent you use to wash your vehicle is sufficient to clean the part. Do not use any harsh abrasive detergents.

TOOLS FOR EASY INSTALLATION:

- Soft Cloth or Alcohol Wipe
- Grease Pencil
- Masking Tape

PLEASE READ: Manufacturer is not responsible for any damage, and the installation of our parts is done with the buyer's understanding that this scratching and paint wear may occur.

LIMITED LIFETIME WARRANTY AGAINST ANY MANUFACTURING DEFECTS: To claim warranty you must provide Proof of Purchase.

INCLUDED IN HARDWARE KIT:

1.

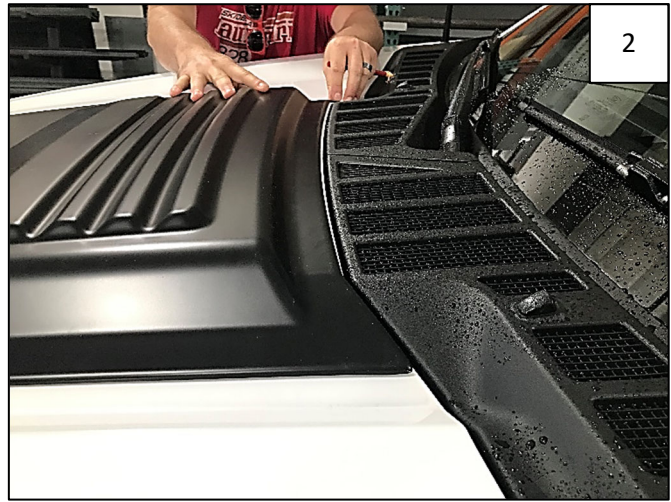


Alcohol Wipe
4 pcs

SECTION 1: HOOD SCOOP INSTALLATION



Vehicle surface must be free of dust and dirt and dry. Use supplied alcohol wipe to clean hood at areas of tape. Alternately: **Clean area with alcohol or degreaser.**



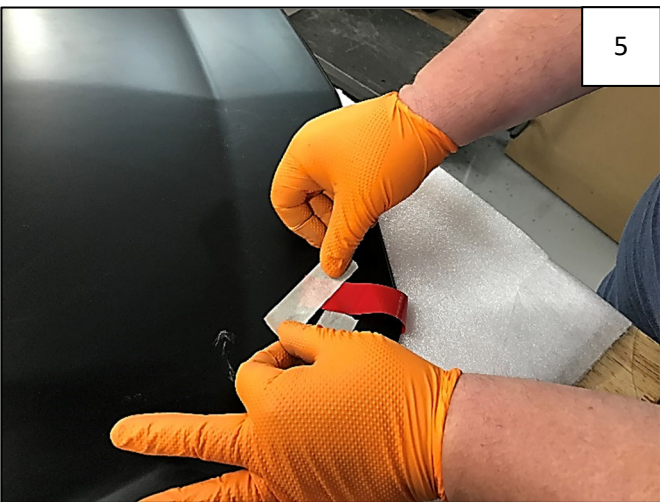
Before peeling any tape, place part carefully on hood, aligning rear edge of Hood Protector with the edge of the hood, about 1mm from rolled edge of hood.



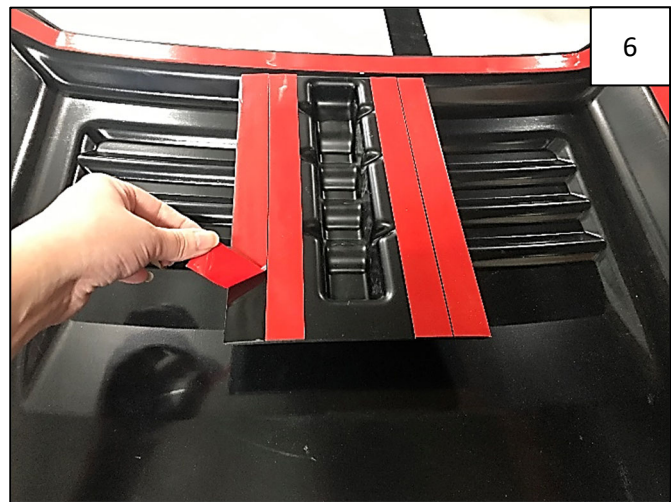
Using a grease pencil, mark hood at rear corner. You can also use masking tape to mark.



Mark along opposite rear corner of part. Remove part and check both marks to make sure they are evenly placed along hood feature. If placement is good, proceed to Step 5.



Peel 2-3 inches from each piece of tape around perimeter of part, at each end. Use masking tape to secure tape leaders to outside of part.



Peel red liner *completely* from 4 pieces of tape located in center of part.



Replace part on hood, slowly and carefully aligning with rear of hood and with marks made in Steps 3-4. **NOTE:** Once the tape adheres, the part cannot be adjusted.



Lower part onto hood, maintaining position. Once the tape begins to contact the hood, adhesion is immediate. Press center of part to adhere four center tape pads.



Begin pulling red tape leaders, discarding masking tape. Carefully pull each tape leader at a 45-degree angle away from part into interior of vehicle to release from the tape, pressing against part as you go.



Press part against vehicle at areas of tape for 30 seconds to ensure full adhesion. Tape cures after 24 hours at 65 degrees.



Completed Hood Scoop Installation.

