



Jeep TJ 1997-06 7in Headlight with DRL HALO

Thank you for choosing Rough Country for all your vehicle needs.

Please read instructions before beginning installation. Check the kit hardware against the kit contents shown below. Be sure you have all needed parts and know where they go. If question exist, please call us @1-800-222-7023. We will be happy to answer any questions concerning this product. Check all fasteners for proper torque. Check to ensure for adequate clearance between all components. Periodically check all hardware for tightness.

KIT CONTENTS:
 7in Headlight with DRL x2
 H13 to H4 Adaptor x2

TOOLS NEEDED:
 T15 Torx Bit
 Pliers
 Crimping Tool

HARDWARE INCLUDED:
 Wire Connectors x4
 Barrell Connectors x4
 5' Wire (To be cut to length)



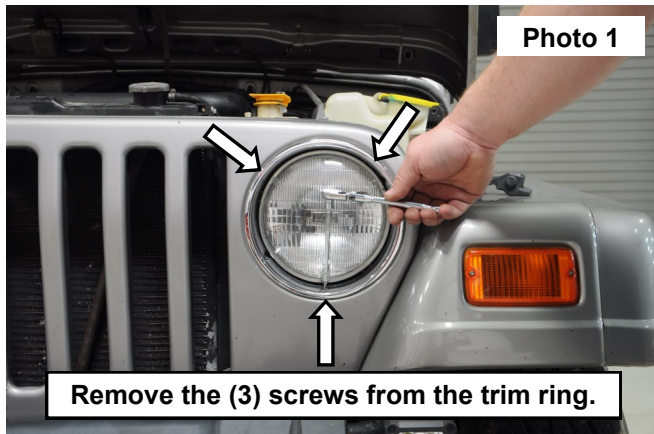
Torque Specs:

Size	Grade 5	Grade 8	Size	Class 8.8	Class 10.9
5/16"	15 ft/lbs	20ft/lbs	6MM	5ft/lbs	9ft/lbs
3/8"	30 ft/lbs	35ft/lbs	8MM	18ft/lbs	23ft/lbs
7/16"	45 ft/lbs	60ft/lbs	10MM	32ft/lbs	45ft/lbs
1/2"	65 ft/lbs	90ft/lbs	12MM	55ft/lbs	75ft/lbs
9/16"	95 ft/lbs	130ft/lbs	14MM	85ft/lbs	120ft/lbs
5/8"	135ft/lbs	175ft/lbs	16MM	130ft/lbs	165ft/lbs
3/4"	185ft/lbs	280ft/lbs	18MM	170ft/lbs	240ft/lbs

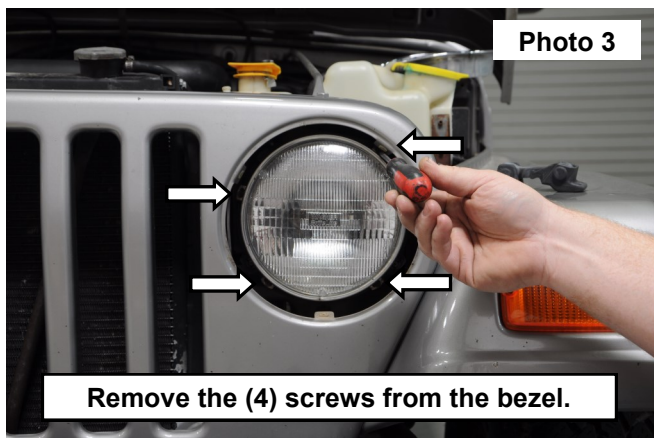


INSTALLATION INSTRUCTIONS

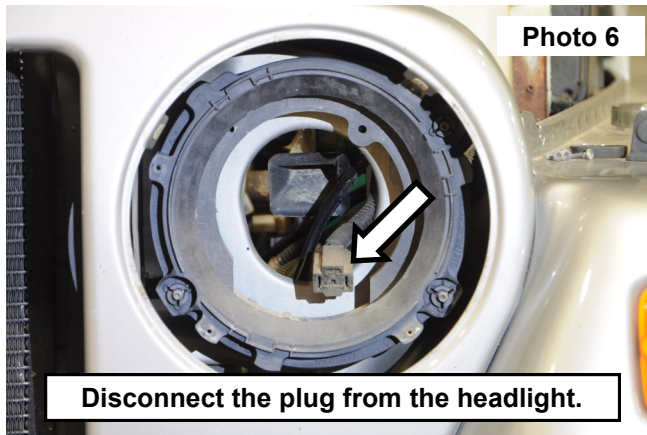
1. Remove the (3) screws from the head light trim ring using T15 Torx bit. Retain hardware. **See Photo 1.**
2. Remove the head light trim ring. **See Photo 2.**



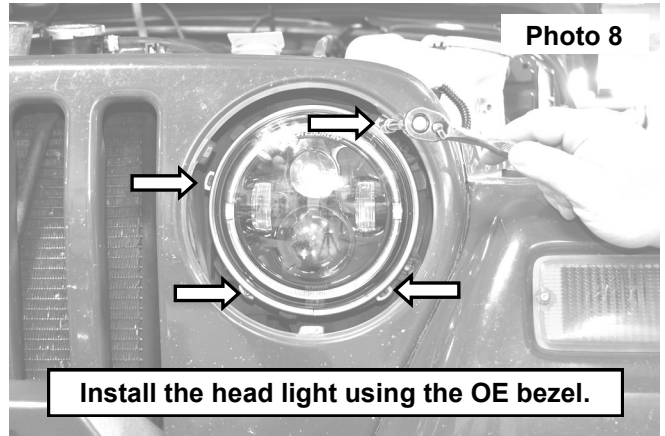
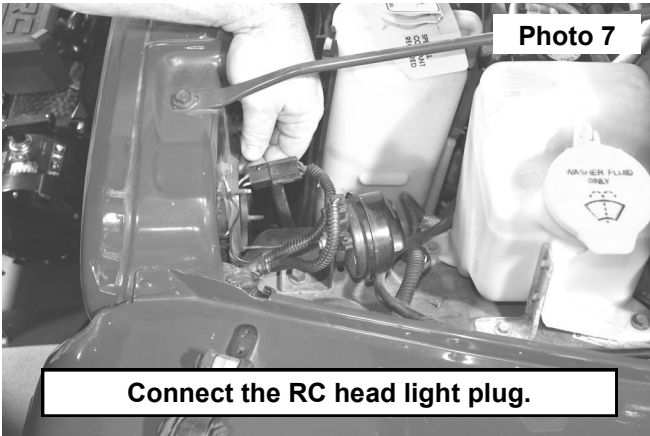
3. Remove the (4) screws from the head light bezel. **See Photo 3.**
4. Support the head light. Then remove the head light bezel. **See Photo 4.**



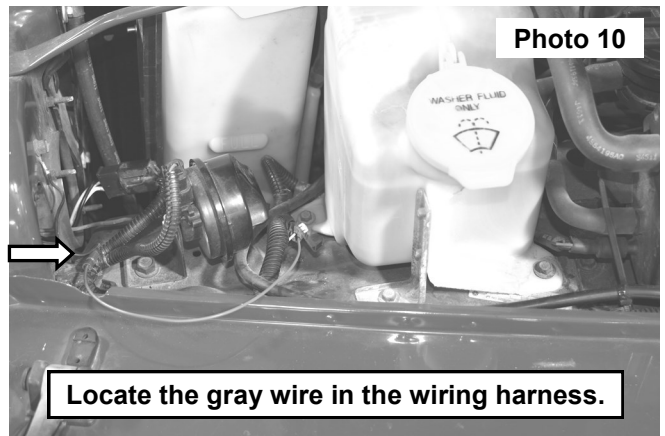
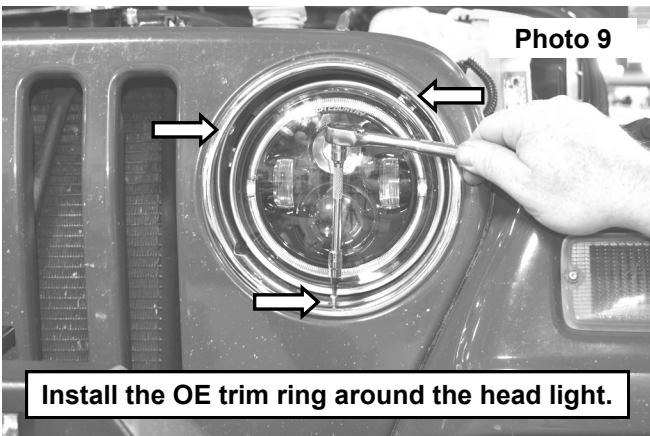
5. Remove the head light and disconnect the plug from the headlight. **See Photos 5 and 6.**



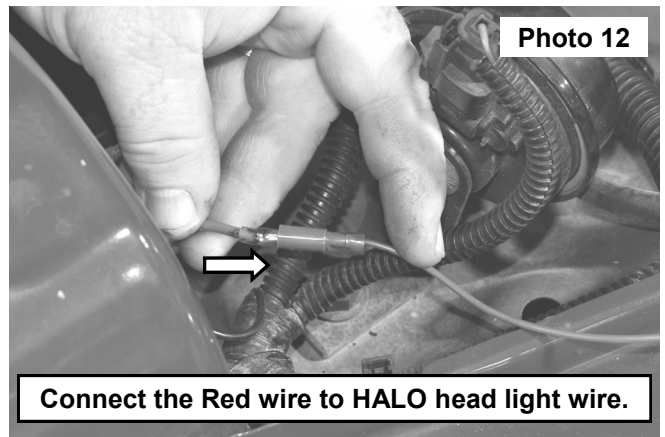
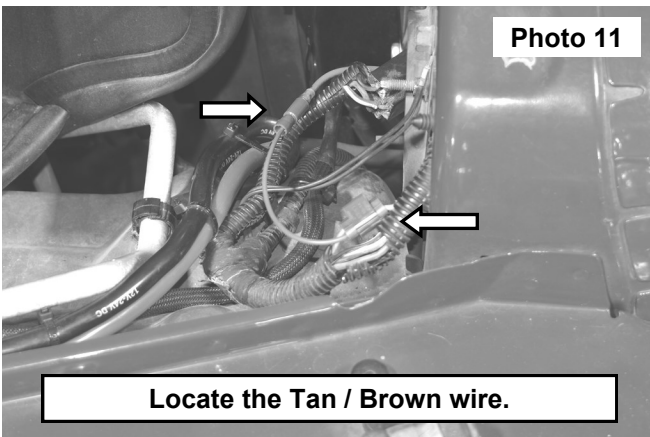
6. Connect the RC head light plug to the OE wiring harness. **See Photo 7.**
7. Install the head light into the vehicle mount and secure using the OE bezel and the (4) retained screws. Tighten using a T15 Torx bit. **See Photo 8.**



8. Install the OE trim ring around the head light using the (3) OE screws. Tighten using a T15 Torx bit. **See Photo 9.**
9. Locate the gray wire in the wiring harness on the drivers side of the vehicle. Use pliers to crimp the supplied connector to attach the red wire to this harness to activate the White DRL HALO of the head light. **See Photo 10.**



10. Locate the Tan / Brown wire in the wiring harness on the drivers side of the vehicle. Use the pliers to crimp the supplied connector to attach the red wire to this harness to activate the Amber turn signal halo of the head light. **See Photo 11.**
11. Connect the Red wire to the head light on the driver and passengers side of the vehicle. **See Photo 12.**



By purchasing any item sold by Rough Country, LLC, the buyer expressly warrants that he/she is in compliance with all applicable, State, and Local laws and regulations regarding the purchase, ownership, and use of the item. It shall be the buyers responsibility to comply with all Federal, State and Local laws governing the sales of any items listed, illustrated or sold. The buyer expressly agrees to indemnify and hold harmless Rough Country, LLC for all claims resulting directly or indirectly from the purchase, ownership, or use of the items.

