

ROUGH COUNTRY

SUSPENSION SYSTEMS®



WARNING: This product contains a chemical known to the State of California to cause Cancer and Reproductive Harm. For more information, go to www.P65Warnings.ca.gov.

2019-2024 JEEP JL 2 & 4 DOOR HOOD PROTECTOR

PRIOR TO INSTALLATION

- A) Install the parts according to these written instructions with the hardware provided. **WARNING:** Failure to install according to these instructions will invalidate the warranty. This includes, but is not limited to, using alternative installation methods, hardware, or materials. **DO NOT USE:** Loctite, Superglue, or similar products on the hardware or the flares. *Install parts on cleaned vehicle surfaces.*
- B) **Fit:** Verify the fit of the parts to vehicle prior to installation (some filing, sanding, or cutting may be necessary to ensure proper fit).
- C) **Painting:** (Optional) if paint is desired it must be done prior to installing parts on vehicle. Clean outer surface with a good grade degreaser. **DO NOT USE LACQUER THINNER OR ENAMEL REDUCER AS A DEGREASER.** Wipe outer surface thoroughly with a tack rag prior to paint. Application of plastic adhesion promoter for TPO plastic as per your paint system manufacturer's recommendations is required. Paint parts using a high-quality enamel, or polyurethane automotive paint.
- D) **Metal Protection:** All exposed fasteners and bare metal should be treated with rust resistant paint **BEFORE** installing parts
- E) **Decals:** Parts may interfere with existing decals on vehicle. If you wish, remove decals prior to installation of parts.
- F) **Care & Cleaning:** Parts are built to last; any detergent you use to wash your vehicle is sufficient to clean the part. Do not use any harsh abrasive detergents.

TOOLS FOR EASY INSTALLATION:

- Soft Cloth or Alcohol Wipe
- 2 Wood Blocks
- Masking Tape (Optional)

PLEASE READ: Dirt and debris can become lodged between the parts and the vehicle's surface, causing scratching and paint wear from vibration. Manufacturer is not responsible for any damage, and the installation of our parts is done with the buyer's understanding that this scratching and paint wear may occur.

LIMITED LIFETIME WARRANTY AGAINST ANY MANUFACTURING DEFECTS: To claim warranty you must provide Proof of Purchase.

INCLUDED IN HARDWARE KIT:

1.



Alcohol Wipe
2 pcs

SECTION 1: HOOD PROTECTOR INSTALLATION



Use supplied alcohol wipe to clean hood at areas of tape. Alternately: **Clean area with alcohol or degreaser.**

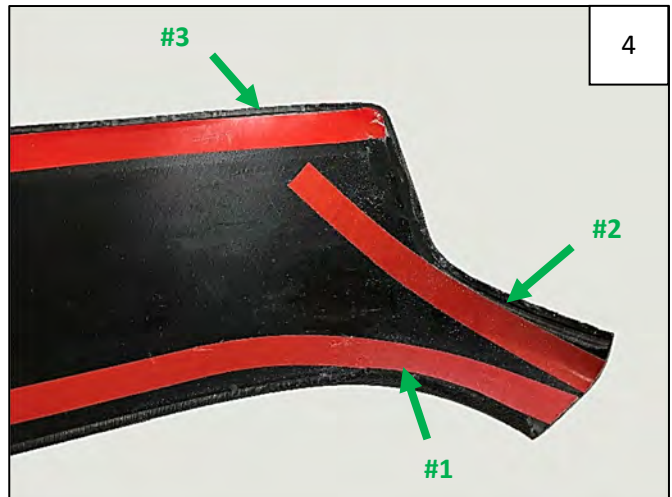
Open hood and prop slightly ajar with a wood block.



Peel 2-3 inches of red tape leader from each piece of tape and fold around to the front of the part (for long tape it is helpful to peel from both ends). **NOTE:** it is helpful to use masking tape to hold leaders in place on front of part.



Place part on hood, making sure all red tape leaders are folded out and accessible. Make sure edge of part aligns with edge of hood.



Start with the tape leader marked #1 first. Carefully pull red tape leader at a 45-degree angle up away from the part to release from the tape, pressing against part as you go.



After pulling a few inches of tape leader #1, press part firmly at area of tape before proceeding, to maintain part position.



Pull rest of tape leaders in numbered order in Step 3. Carefully pull red tape leader at a 45-degree angle up away from the part to release from the tape, pressing against part as you go.



Press part against vehicle at areas of tape for 30 seconds to ensure full adhesion. Tape cures after 24 hours at 65 degrees. Curing will take longer in colder temperatures.



Remove block from under hood and close/latch hood.



Completed Hood Protector Installation.

